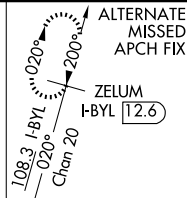


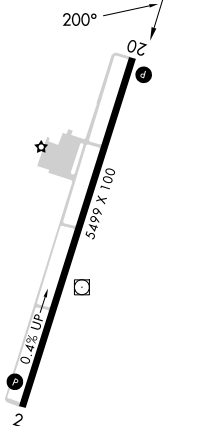
LOC RWY 20  
WILLIAMSBURG-WHITLEY COUNTY (BYL)

**MISSED APPROACH:** Climb to 1800 then climbing left turn to 4000 direct LOZ VOR/DME and hold.

UNICOM  
122.7 (CTAF) 

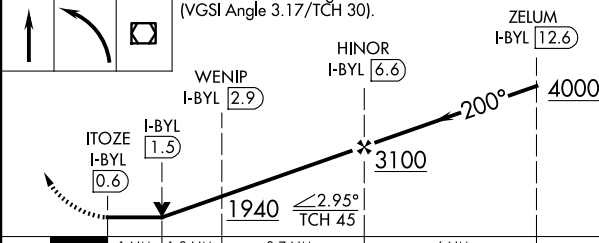
LOCALIZER 108.3  
I-BYL   
Chan 20  
LOC offset 2.88°

ELEV	1178		TDZE	1178
------	------	--	------	------



MIRL Rwy 2-20 **L**  
REIL Rwy 2 and 20 **L**

1800	4000	LOZ	VGSI and descent angles not coincident (VGSI Angle 3.17/TCH 30).
------	------	-----	--



CATEGORY	1 NM 3 NM	3.7 NM	6 NM	
	A	B	C	D
S-20	1760-1	562 (600-1)	1740-1 <sup>5/6</sup>	562 (600-1 <sup>5/6</sup> )
CIRCLING	1760-1 582 (600-1)	1860-1 682 (700-1)	2240-3 1062 (1100-3)	2260-3 1082 (1100-3)