

VOR/DME BDH
113.7
Chan **84**

APP CRS
316°

Rwy Idg **5500**
TDZE **1126**
Apt Elev **1126**

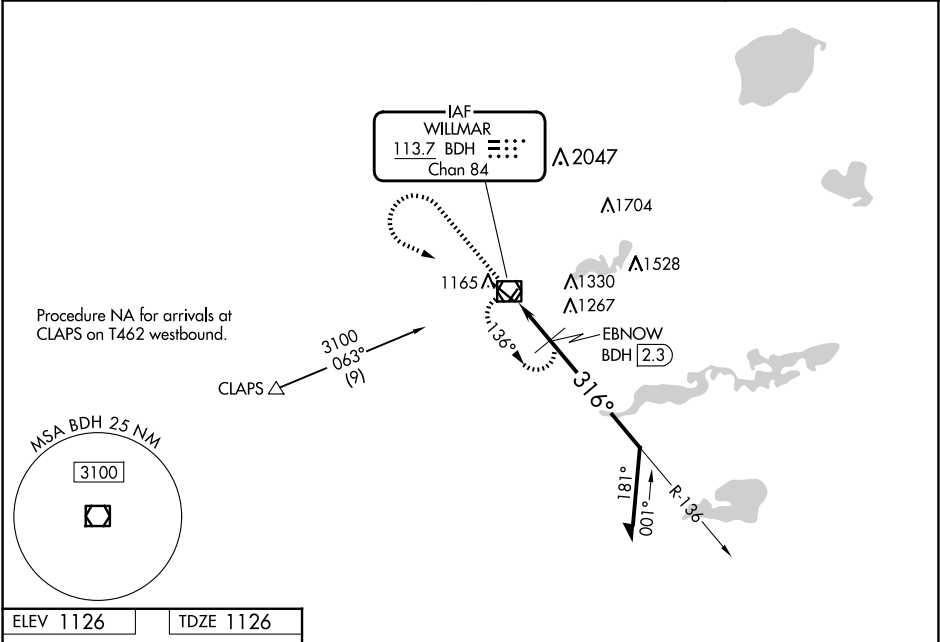
VOR RWY 31

WILLMAR MUNI/JOHN L RICE FLD (BDH)

⚠ Circling NA to Rwys 3 and 21. When local altimeter setting not received, use Olivia altimeter setting and increase all MDAs 60 feet and S-31 visibility Cat C and D ¼ SM; increase EBNOW fix minimums visibility Cat C and D ¼ SM, and Circling visibility Cat D ¼ SM. VDP NA when using Olivia Rgnl altimeter setting.

MISSED APPROACH: Climb to 2500 then climbing left turn to 3100 direct BDH VOR/DME and hold, continue climb-in-hold to 3100.

| | | |
|---------------------------|--|---------------------------------|
| AWOS-3PT 118.75 | MINNEAPOLIS CENTER 125.5 323.1 | UNICOM 122.8 (CTAF) 0 |
|---------------------------|--|---------------------------------|



ELEV 1126

TDZE 1126

2500

3100

BDH

BDH

VOR/DME

3100

Remain within 10 NM

*1860 when using Olivia Rgnl altimeter setting.

BDH 1.4

EBNOW BDH 2.3

1800*

3.00°

TCH 49

1.1 NM

0.9 NM

| CATEGORY | A | B | C | D |
|--------------------|--------------------|--------------------|----------------------|----------------------|
| S-31 | 1800-1 674 (700-1) | | 1800-1½ 674 (700-1½) | |
| CIRCLING | 1800-1 674 (700-1) | | 1800-2 674 (700-2) | 1960-2¾ 834 (900-2¾) |
| EBNOW FIX MINIMUMS | | | | |
| S-31 | 1520-1 394 (400-1) | | 1520-1½ 394 (400-1½) | |
| CIRCLING | 1580-1 454 (500-1) | 1600-1 474 (500-1) | 1660-1½ 534 (600-1½) | 1960-2¾ 834 (900-2¾) |

HIRL Rwy 13-31 0

REIL Rwy 31 0