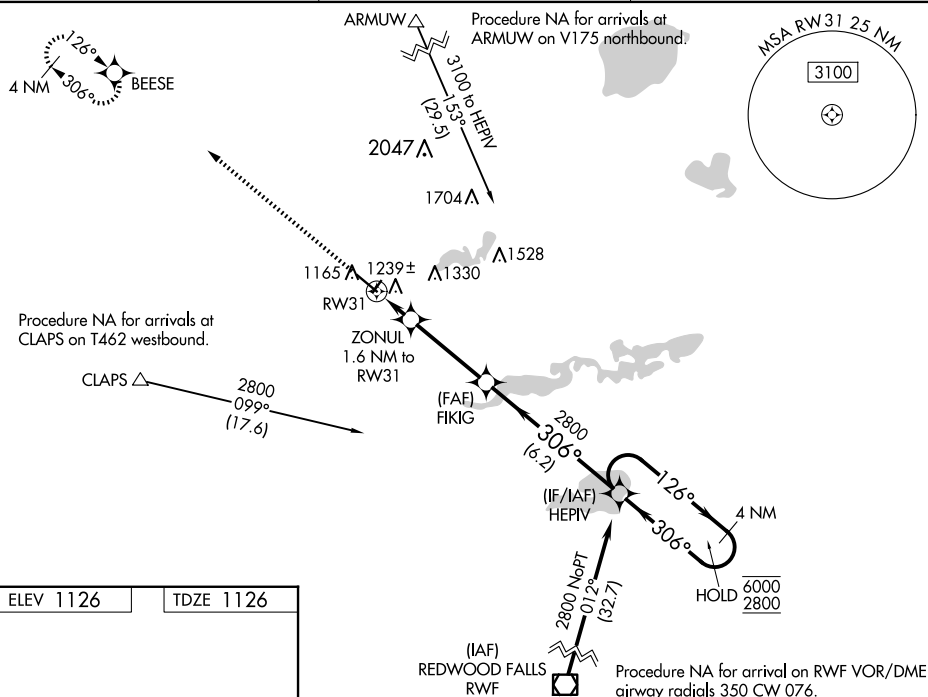


24025

# RNAV (GPS) RWY 31

**V** For uncompensated Baro-VNAV systems, LNAV/VNAV NA below -17°C or above  
**A** 54°C. When local altimeter setting not received, use Olivia altimeter setting; increase  
LPV DA to 1381 feet; increase LNAV/VNAV DA to 1475 feet and all visibilities ½ SM;  
increase all MDAs 60 feet and LNAV visibility Cat C and D ¼ SM. Baro-VNAV and  
VDP NA when using Olivia Rgnl altimeter setting.

**MISSED APPROACH:** Climb to 2800 direct BEESE and hold.

UNICOM  
122.8 (CTAF) **L**

**ZONUL**  
1.6 NM to RW31

**FIKIG**  
2800

**HEP**  
4 NM Holding Pattern

1 NM to RW31  
RW31  
1680

GP 3.00°  
TCH 49

CATEGORY	A	B	C	D
LPV DA		1326-¾	200 (200-¾)	
LNAV/VNAV DA		1420-¾	294 (300-¾)	
LNAV MDA		1500-1	374 (400-1)	

WILLMAR MUNI/JOHN L RICE FLD (BDH)  
RNAV (GPS) RWY 31