

WAAS CH <b>93518</b> <b>W16A</b>	APP CRS <b>164°</b>	Rwy Idg TDZE <b>2433</b> Apt Elev <b>2437</b>
--	------------------------	---

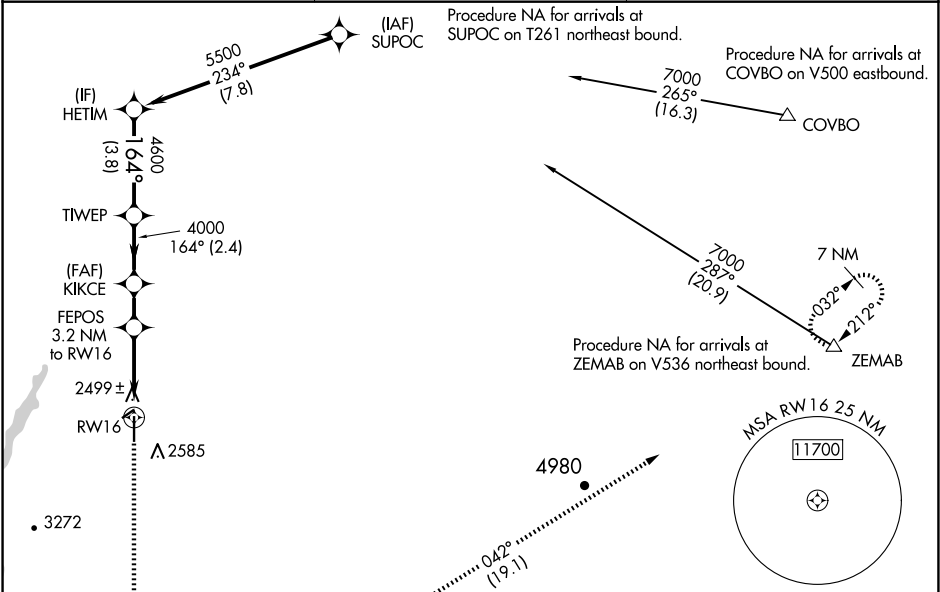
RNAV (GPS) RWY 16

MADRAS MUNI (S33)

Baro-VNAV NA when using Redmond altimeter setting. For uncompensated Baro-VNAV systems, LNAV/VNAV NA below -19°C (-2°F) or above 54°C (130°F). Rwy 16 helicopter visibility reduction below ¾ SM NA. DME/DME RNP-0.3 NA. When local altimeter setting not received, use Redmond altimeter setting and increase all DA and MDA 580 feet; increase LPV all Cats visibility 2½ SM, LNAV/VNAV all Cats visibility 2½ SM, LNAV and Circling Cat A visibility ¼ SM, LNAV and Circling Cat B visibility ½ SM, and increase LNAV and Circling Cat C visibility ¼ SM.

MISSED APPROACH: Climb to 7000 direct HUKRI and on track 074° to JOREM and on track 042° to ZEMAB and hold.

AWOS-3PT <b>132.425</b>	SEATTLE CENTER <b>126.15 269.475</b>	UNICOM <b>122.8 (CTAF)</b>
----------------------------	---	-------------------------------



	ELEV 2437		TDZE 2433	
	164°			
	HETIM	7000 HUKRI	JOREM tr 074°	ZEMAB tr 042°
	5500	TIWEP	KIKCE	FEPOS 3.2 NM to RW16
	4600	4000	3500	RW16
	* LNAV only			
	GP 3.00° TCH 54			
	3.8 NM 2.4 NM 1.6 NM 3.2 NM			
CATEGORY	A	B	C	D
LPV DA	2783-1½		350 (400-1½)	NA
LNAV/VNAV DA	2843-1¾		410 (500-1¾)	NA
LNAV MDA	3040-1	607 (700-1)	3040-1¾ 607 (700-1¾)	NA
CIRCLING	3040-1	603 (700-1)	3040-1¾ 603 (700-1¾)	NA

