

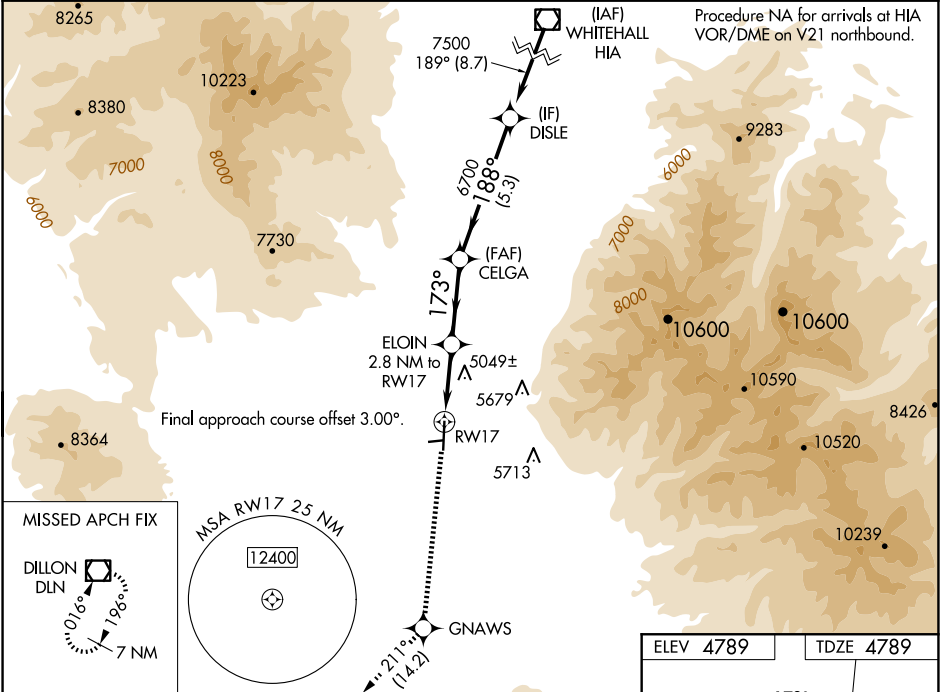
WAAS CH <b>93840</b> <b>W17A</b>	APP CRS <b>173°</b>	Rwy Ldg TDZE Apt Elev	<b>6000</b> <b>4789</b> <b>4789</b>
--	------------------------	-----------------------------	---

RNAV (GPS) RWY 17

RUBY VALLEY FLD (RVF)

RNP APCH - GPS.	MISSED APPROACH: Climb to 11100 direct GNAWS and on track 211° to DLN VOR/DME and hold, continue climb-in-hold to 11100.
⚠ Circling NA to Rwy's 7 and 25. Circling NA east of Rwy 17-35. Rwy 17 helicopter visibility reduction below ¾ SM NA. Baro-VNAV NA.	

AWOS-3PT <b>119.025</b>	SALT LAKE CENTER <b>132.4 338.3</b>	CTAF <b>122.90</b>
----------------------------	--	-----------------------



11100	GNAWS	DLN	tr 211°	VGSI and RNAV glidepath not coincident (VGSI Angle 3.00/TCH 28).	DISLE
CATEGORY	A	B	C	D	
LPV DA	5064-1 275 (300-1)				
LNAV/VNAV DA	5443-1⅞ 654 (700-1⅞)				
LNAV MDA	5300-1	511 (600-1)	5300-1⅓	511 (600-1⅓)	
CIRCLING	5300-1	511 (600-1)	5300-1½ 511 (600-½)	5460-2¼ 671 (700-2¼)	

