

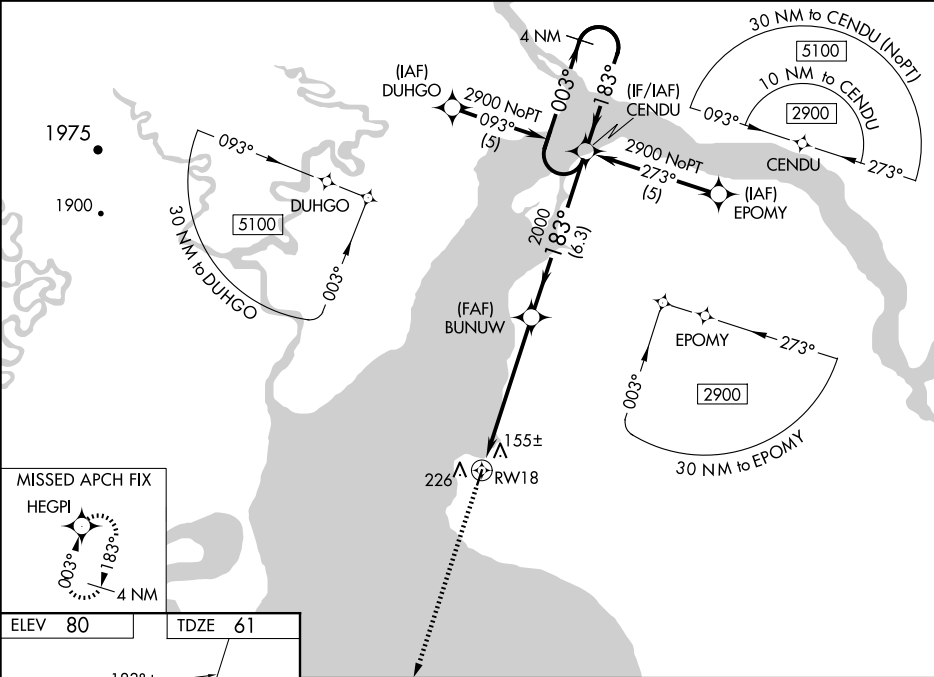
WAAS CH 82213 W18A	APP CRS 183°	Rwy Idg 3200 TDZE 61 Apt Elev 80
--	------------------------	---

RNAV (GPS) RWY 18

CLARKS POINT (CLP) (PFCL)

RNP APCH - GPS.	MISSED APPROACH: Climb to 2900 direct HEGPI and hold.
<div><div>▼</div><div>▲ NA</div></div> Baro-VNAV NA. Procedure NA at night. When local altimeter setting not received, use Dillingham altimeter setting. Rwy 18 helicopter visibility reduction below 1 SM NA.	

AWOS-3P 121.45	ANCHORAGE CENTER 132.75 282.35	CTAF 122.9 0
--------------------------	--	------------------------



183° to RW18

81

3200 X 40

36

★

2900

↑

HEGPI

★

BUNUW

2000

2000

183°

183°

003°

4 NM Holding Pattern

GP 3.07°

TCH 40

RW18

5.7 NM

6.3 NM

CENDU

CATEGORY	A	B	C	D
LPV DA	355-1 294 (300-1)			
LNAV/VNAV DA	464-1½ 403 (400-1½)			
LNAV MDA	620-1 559 (600-1)	620-1½ 559 (600-1½)	620-1¾ 559 (600-1¾)	620-2 559 (600-2)
CIRCLING	620-1 540 (600-1)	700-1 620 (700-1)	700-1¾ 620 (700-1¾)	700-2 620 (700-2)

MIRL Rwy 18-36

1