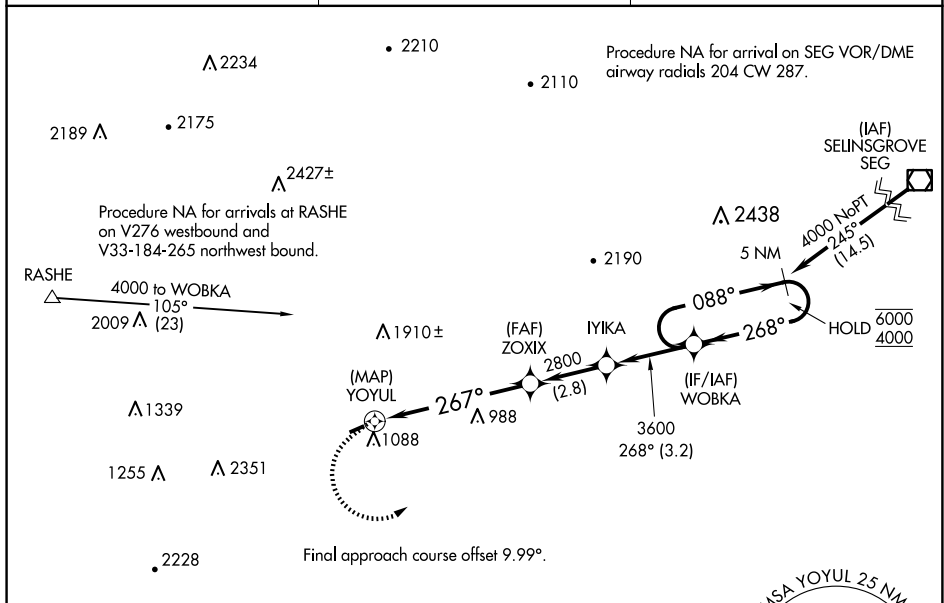


APP CRS 267°	Rwy Idg TDZE Apt Elev	2627 545 545
------------------------	-----------------------------	---

RNAV (GPS) RWY 26
MIFFLINTOWN (P34)

RNP APCH - GPS.		
▼	Procedure NA at night. Rwy 26 helicopter visibility reduction below 1 SM NA.	MISSED APPROACH: Climbing left turn to 4000 direct WOBKA and hold, continue climb-in-hold to 4000.
▲ NA	Circling NA north of Rwy 8-26. Use Penn Valley altimeter setting; when not received, use Reedsville altimeter setting and increase all MDAs 240 feet and LNAV visibility Cat B ¼ SM.	

SEG ASOS 123.975	NEW YORK APP CON 134.8 338.3	UNICOM 122.8 (CTAF) 0
----------------------------	--	---------------------------------



ELEV	545		TDZE	545
------	-----	--	------	-----

