

APP CRS <b>196°</b>	Rwy Idg TDZE Apt Elev	<b>3815</b> <b>1276</b> <b>1276</b>
------------------------	-----------------------------	---

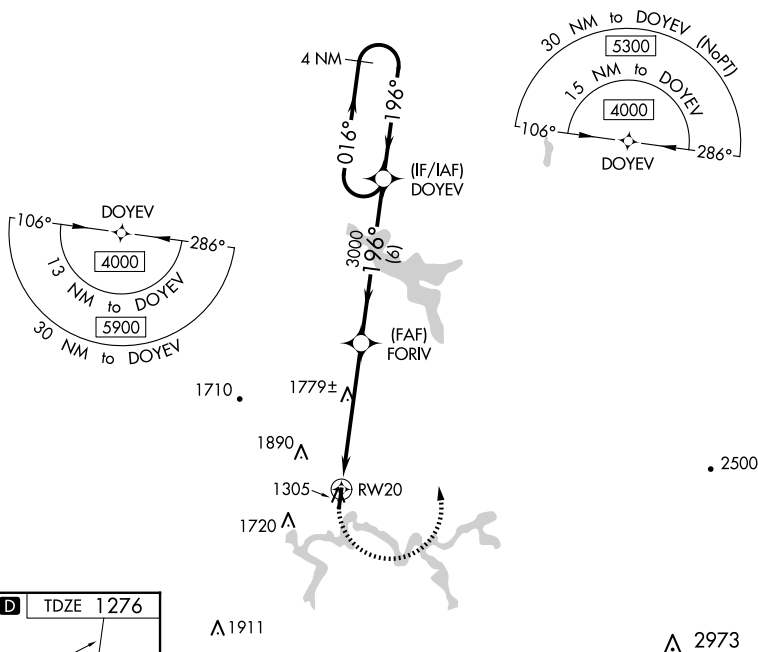
## RNAV (GPS) RWY 20

BRAXTON COUNTY (48I)

- T** DME/DME RNP-0.3 NA. Procedure NA at night. Helicopter visibility reduction below 1 SM NA.  
**A** NA When local altimeter setting not received, use Clarksburg altimeter setting and increase all MDA 260 feet. Increase LNAV Cat A/B visibility  $\frac{1}{4}$  mile, LNAV Cat C visibility  $\frac{1}{2}$  mile, and Circling Cat A visibility  $\frac{1}{4}$  mile.

**MISSED APPROACH.** Climbing left turn to 4000 direct DOYEV and hold.

AWOS-3PT <b>118.225</b>	CLARKSBURG APP CON ★ <b>121.15 284.65</b>	CTAF <b>122.9 0</b>
----------------------------	--	------------------------



4000

DOYEV

VGSI and descent angles not coincident (VGSI Angle 4.00/TCH 40).

4 NM Holding Pattern

DOYEV

FORIV

196°

016°

4000

3000

3.00° TCH 40

RW20

5.3 NM

6 NM

CATEGORY	A	B	C	D
LNAV MDA	2060-1 784 (800-1)	2060-1 ¼ 784 (800-1 ¼)	2060-2 ½ 784 (800-2 ½)	NA
<b>C</b> CIRCLING	2060-1 784 (800-1)	2240-1 ½ 964 (1000-1 ½)	2240-3 964 (1000-3)	NA