

WAAS CH 82039 W13A	APP CRS 132°	Rwy Idg TDZE Apt Elev	5500 4227 4264
--	------------------------	-----------------------------	---

RNAV (GPS) RWY 13

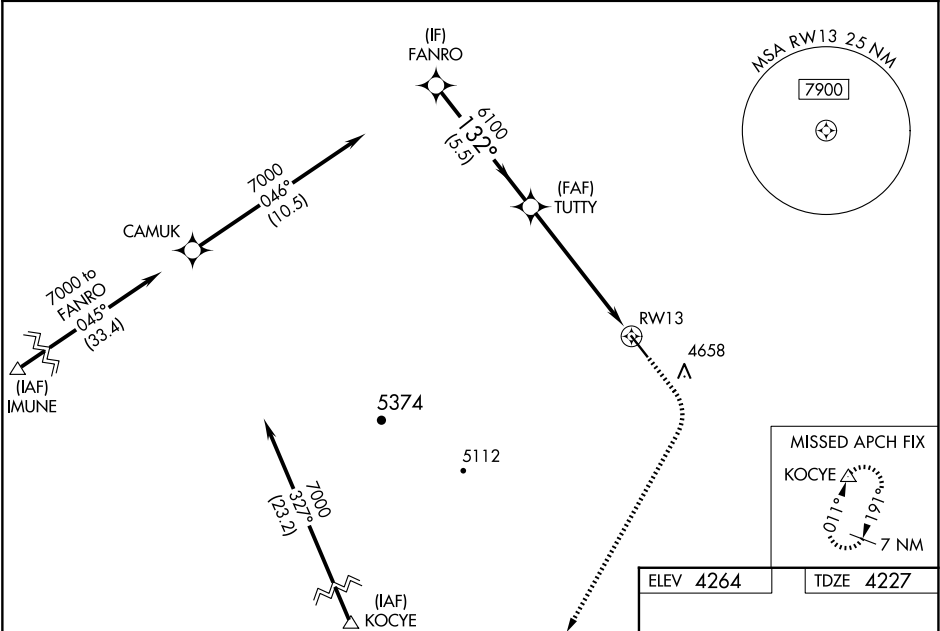
HULETT MUNI (W43)

RNP APCH.

For uncompensated Baro-VNAV systems, procedure NA below -23°C or above 53°C. Procedure NA at night. Baro-VNAV and VDP NA when using Gillette altimeter setting. When local altimeter setting not received, use Gillette altimeter setting and increase LPV DA to 4662 feet; LNAV/VNAV DA to 4807 feet, and all visibilities ½ SM. Increase all MDA 120 feet and LNAV Cat C/D visibility ½ SM, Circling Cat A/B ¼ SM, and Cat C ½ SM.

MISSED APPROACH:
Climb to 4700 then climbing right turn to 7600 direct KOCYE and hold.

AWOS-3PT 128.775	DENVER CENTER 127.95 338.2	UNICOM 122.8 (CTAF)
----------------------------	--------------------------------------	-------------------------------



FANRO

7000

GP 3.00°
TCH 40

TUTTY

6100

KOCYE

4700

7600

* LNAV only

132°

6100

5.5 NM

3.7 NM

2.2 NM

RW13

CATEGORY	A	B	C	D
LPV DA	4542-1⅞		315 (300-1⅞)	
LNAV/VNAV DA	4687-1¾		460 (500-1¾)	
LNAV MDA	5100-1 873 (900-1)	5100-1¼ 873 (900-1¼)	5100-2½ 836 (900-2½)	873 (900-2½)
CIRCLING	5100-1 836 (900-1)	5100-1¼ 836 (900-1¼)	5100-2½ 836 (900-2½)	5400-3 1136 (1200-3)

ELEV 4264

TDZE 4227

132° to RW13

1.3% UP

5500 X 75

31

MIRL Rwy 13-31

REIL Rwy 13 and 31