

WAAS CH 56529 W07A	APP CRS 067°	Rwy Idg TDZE 3490 Apt Elev 3490
--	------------------------	---

RNAV (GPS) RWY 7

ROUNDUP (RPX)

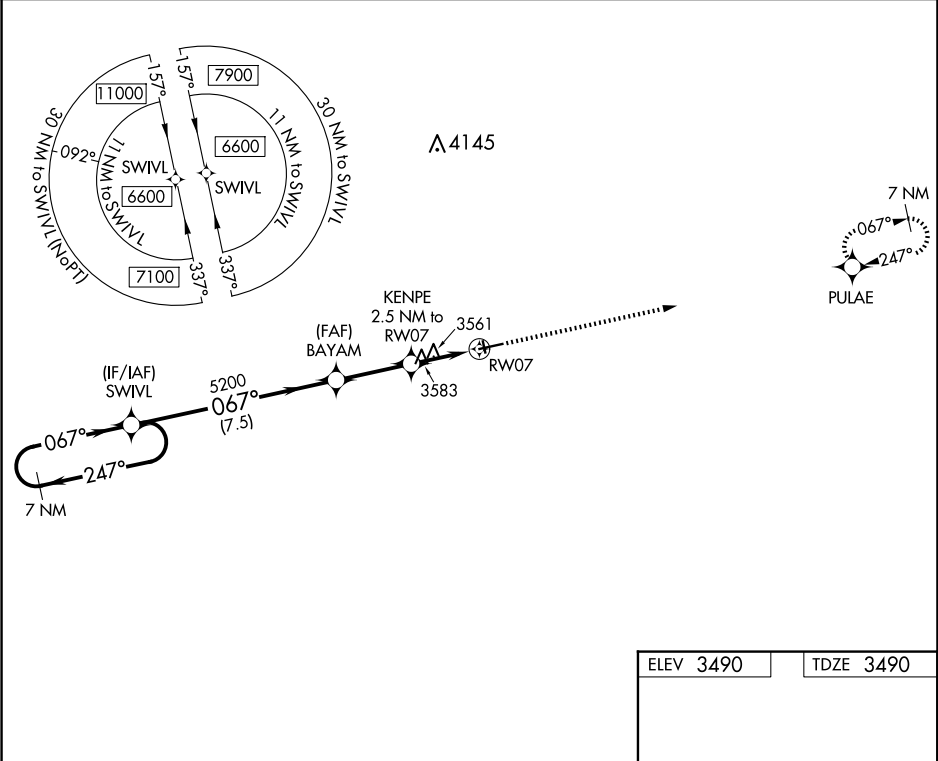
▼

▲ NA

Use Billings altimeter setting, when not received, procedure NA.
When VGSi inop, Straight-in/Circling Rwy 7 procedure NA at night.
DME/DME RNP-0.3 NA. Visibility reduction by helicopters NA.

MISSED APPROACH: Climb to 6300 direct PULAE and hold.

BIL ASOS 126.3	SALT LAKE CENTER 126.85 305.2	UNICOM 122.8 (CTAF)	122.7
--------------------------	---	-------------------------------	--------------



7 NM Holding Pattern

SWIVL

VGSI and descent angles not coincident (VGSI Angle 4.00/TCH 43).

6300

PULAE

6600

247°

067°

067°

5200

4320

3.00° TCH 44

2.5 NM to RW07

7.5 NM

2.7 NM

2.5 NM

RW07

6300

PULAE

067° to RW07

0.8% UP

2440 X 100

5099 X 75

0.7% UP

25

34

CATEGORY	A	B	C	D
LP MDA	3940-1	450 (500-1)	3940-1 $\frac{3}{8}$	450 (500-1 $\frac{3}{8}$)
LNAV MDA	3960-1	470 (500-1)	3960-1 $\frac{3}{8}$	470 (500-1 $\frac{3}{8}$)
CIRCLING	4000-1	510 (600-1)	4140-1 $\frac{3}{4}$ 650 (700-1 $\frac{3}{4}$)	4340-2 $\frac{3}{4}$ 850 (900-2 $\frac{3}{4}$)

MIRL Rwy 7-25