

APP CRS 038°	Rwy Idg	4000
	TDZE	1034
	Apt Elev	1036

RNAV (GPS) RWY 4

TOMPKINSVILLE/MONROE COUNTY (T'ZV)

T

NA

DME/DME RNP-0.3 NA.

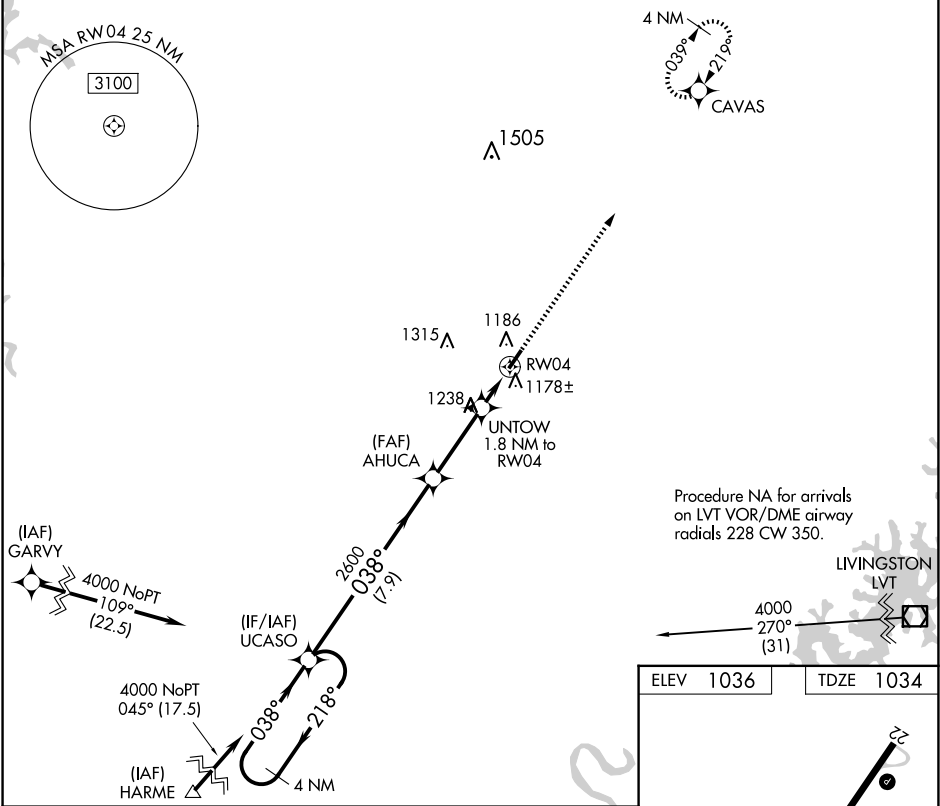
Helicopter visibility reduction below 1 SM NA.

Night landing: Rwy 4 NA.

Use Glasgow altimeter setting.

MISSED APPROACH: Climb to 4000 direct CAVAS and hold.

AWOS-AV 124.175	GLW AWOS-3 118.525	MEMPHIS CENTER 132.9 290.3	UNICOM 123.05 (CTAF) 0
---------------------------	------------------------------	--------------------------------------	----------------------------------



Visual Segment - Obstacles.				
<div>4000</div> <div>CAVAS</div> <div>4 NM Holding Pattern</div> <div>UCASO</div> <div>AHUCA</div> <div>UNTOW 1.8 NM to RW04</div> <div>RW04</div> <div>7.9 NM</div> <div>3.1 NM</div> <div>1.8</div>				
CATEGORY	A	B	C	D
LNAV MDA	1540-1	506 (600-1)	1540-1 3/8 506 (600-1 3/8)	NA
CIRCLING	1640-1 604 (700-1)	1800-1 764 (800-1)	1840-2 1/4 804 (900-2 1/4)	NA

