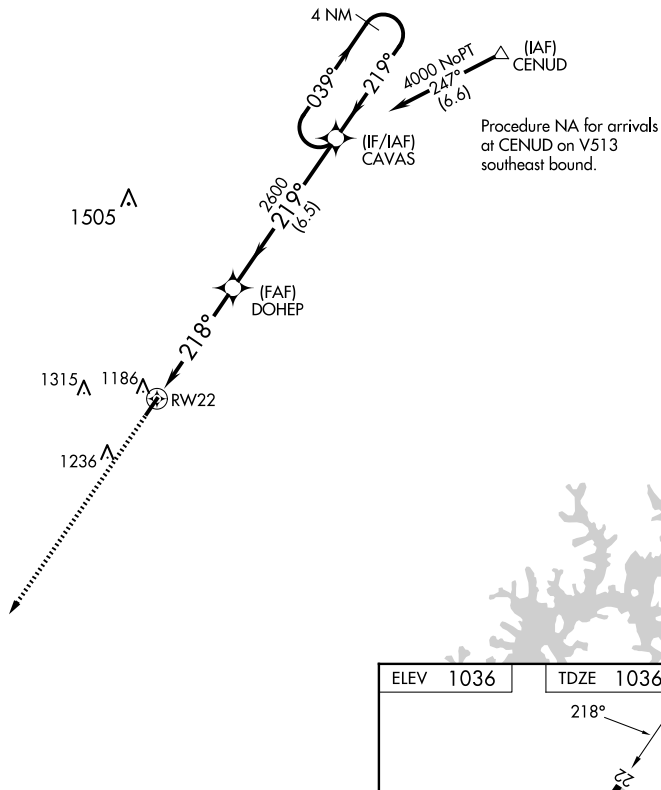
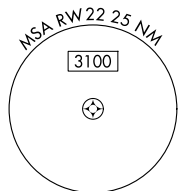




RNAV (GPS) RWY 22  
TOMPKINSVILLE/MONROE COUNTY (TZV)

MISSED APPROACH: Climb to 4000 direct UCASO and hold.

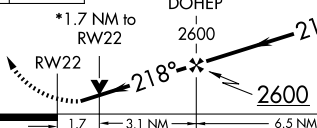
UNICOM  
123.05 (CTAF) **L**

SE-1, 10 JUL 2025 to 07 AUG 2025

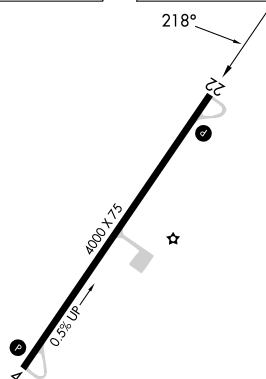
4000	UCASO
	

\* LNAV only.

CAVAS 4 NM Holding Pattern 039° → 4000



		1.7	3.1 NM	6.5 NM	
CATEGORY		A	B	C	D
LPV DA		1385-1¼ 349 (400-1¼)			NA
RNAV/VNAV DA		1593-2 557 (600-2)			NA
RNAV MDA		1620-1 584 (600-1)	1620-1¼ 584 (600-1¼)		NA
CIRCLING		1640-1 604 (700-1)	1800-1 764 (800-1)	1840-2¼ 804 (900-2¼)	NA



MIRL Rwy 4-22 **L**  
REIL Rwy 4 and 22 **L**