

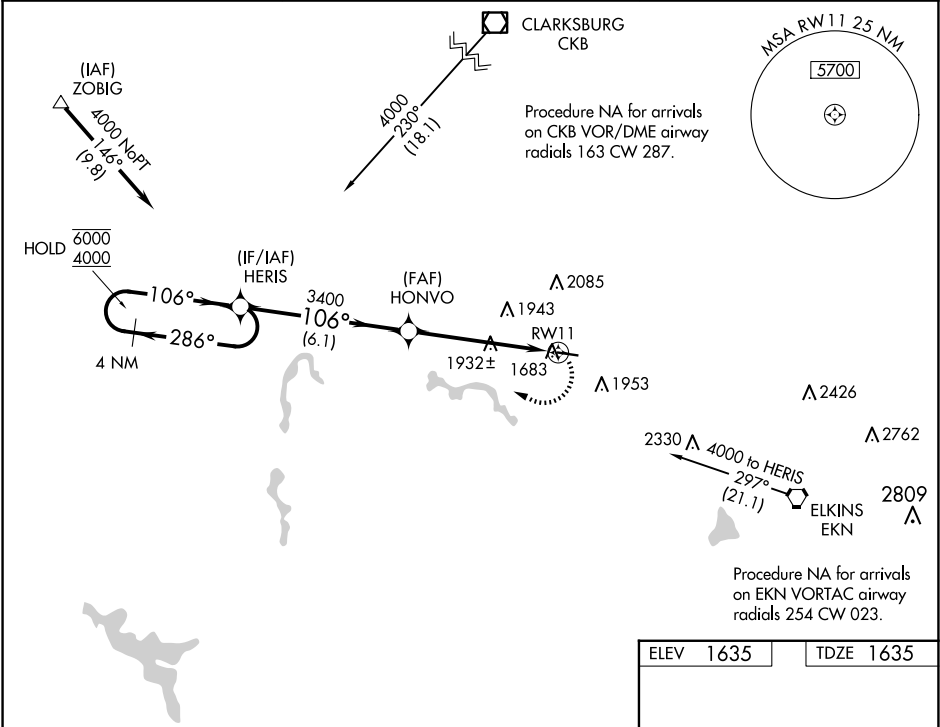
WAAS CH 72724 W11A	APP CRS 106°	Rwy Idg TDZE Apt Elev	4201 1635 1635
--	------------------------	-----------------------------	---

RNAV (GPS) RWY 11

UPSHUR COUNTY RGNL (W22)

RNP APCH - GPS.	MISSED APPROACH: Climbing right turn to 4000 direct HERIS and hold.
<div><div></div><div>Rwy 11 helicopter visibility reduction below ¾ SM NA.</div></div>	

AWOS-3 119.975	CLARKSBURG APP CON ★ 121.15 284.65	UNICOM 122.8 (CTAF) 0
--------------------------	--	---------------------------------



ELEV 1635	TDZE 1635
-----------	-----------

