

APP CRS	Rwy Idg	<b>3300</b>
<b>192°</b>	TDZE	<b>85</b>
	Apt Elev	<b>85</b>

RNAV (GPS) RWY 19  
BRANTLEY COUNTY (4J1)

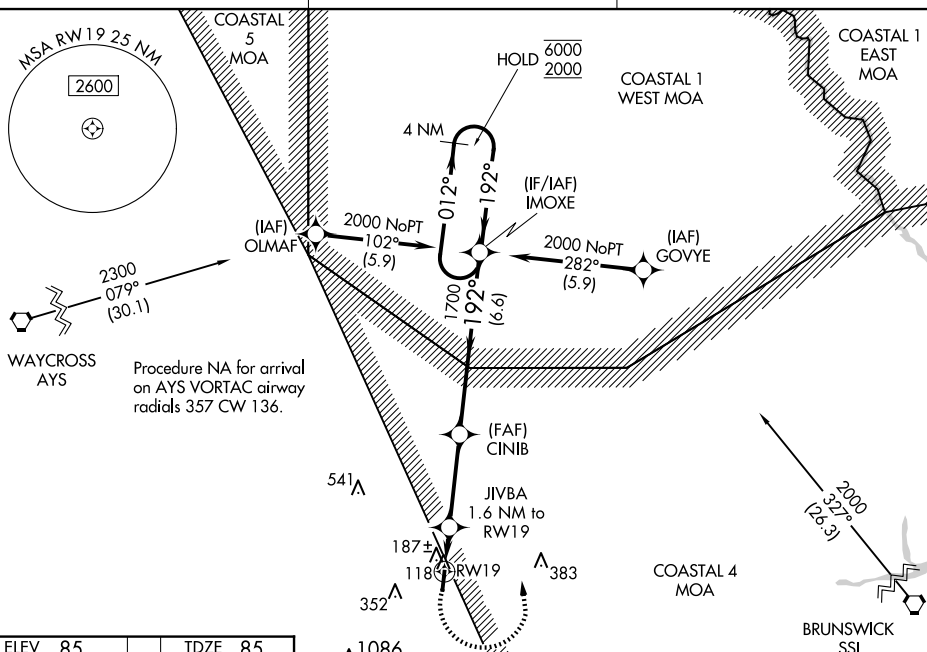
RNP APCH - GPS.

**T** Rwy 19 helicopter visibility reduction below 1 SM NA. Use Brunswick Golden Isles altimeter setting. Straight-in Rwy 19 NA at night, Circling Rwy 19 NA at night.

**MISSED APPROACH:** Climb to 700 then climbing left turn to 2000 direct IMOXE and hold.

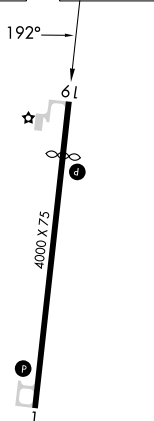
BQK AWOS-3  
**124.175**

JACKSONVILLE CENTER  
127.575 269.025

CTAF  
122.9 **L**

SE-4, 10 JUL 2025 to 07 AUG 2025

FILEV 85		TDZFE 85
----------	--	----------

MIRL Rwyys 1-19 **L**

NAHUNTA, GEORGIA  
Amdt 1 05OCT23

31°12'N-81°54'W

BRANTLEY COUNTY (4J1)

RNAV (GPS) RWY 19

SE-4, 10 JUL 2025 to 07 AUG 2025

CATEGORY	A	B	C	D
INAV MDA	500-1	415 (500-1)	500-1½	415 (500-1½)
CIRCLING	560-1 475 (500-1)	720-1 635 (700-1)	720-1¾ 635 (700-1¾)	780-2¼ 695 (700-2¼)