

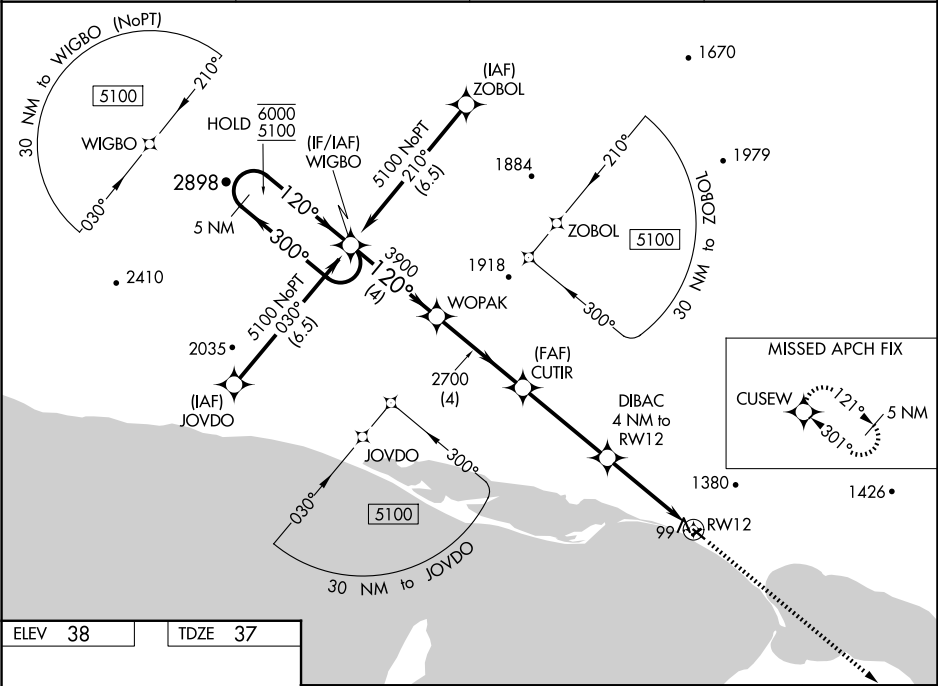
WAAS CH <b>77628</b> <b>W12A</b>	APP CRS <b>120°</b>	Rwy Idg TDZE Apt Elev	<b>2990</b> <b>37</b> <b>38</b>
----------------------------------------	------------------------	-----------------------------	---------------------------------------

RNAV (GPS) RWY 12

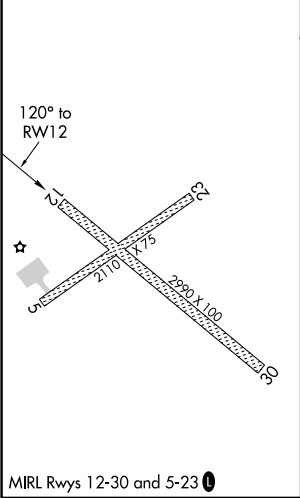
BREVIG MISSION (KTS)(P'FKT)

RNP APCH.	MISSED APPROACH: Climb to 6300 direct CUSEW and hold, continue climb-in-hold to 6300.
<div><div></div><div></div></div> <div>Circling NA north of Rws 12 and 23. Circling Rwy 23 NA at night. For uncompensated Baro-VNAV systems, LNAV/VNAV NA below -25° C or above 54°C.</div>	

AWOS-3P <b>121.55</b>	ANCHORAGE CENTER <b>133.3 290.4</b>	NOME RADIO <b>135.6</b>	CTAF <b>123.00</b>
--------------------------	----------------------------------------	----------------------------	-----------------------



ELEV 38	TDZE 37
---------	---------



5 NM Holding Pattern		WOPAK	CUTIR	DIBAC 4 NM to RW12	6300 CUSEW
6000 5100		300° 120°	120° 3900	2700	*LNAV only.
GP 3.12° TCH 40					*0.9 NM to RW12
		4 NM	4 NM	3.9 NM	3.1 NM 0.9
CATEGORY	A	B	C	D	
LPV DA	287-1	250 (300-1)	NA		
LNAV/VNAV DA	287-1	250 (300-1)	NA		
LNAV MDA	360-1	323 (400-1)	NA		
CIRCLING	620-1 582 (600-1)	1460-1½ 1422 (1500-1½)	NA		