

APP CRS
176°

Rwy Ldg
TDZE
Apt Elev

3401
595
599

RNAV (GPS) RWY 18

HEFNER-EASLEY (H68)

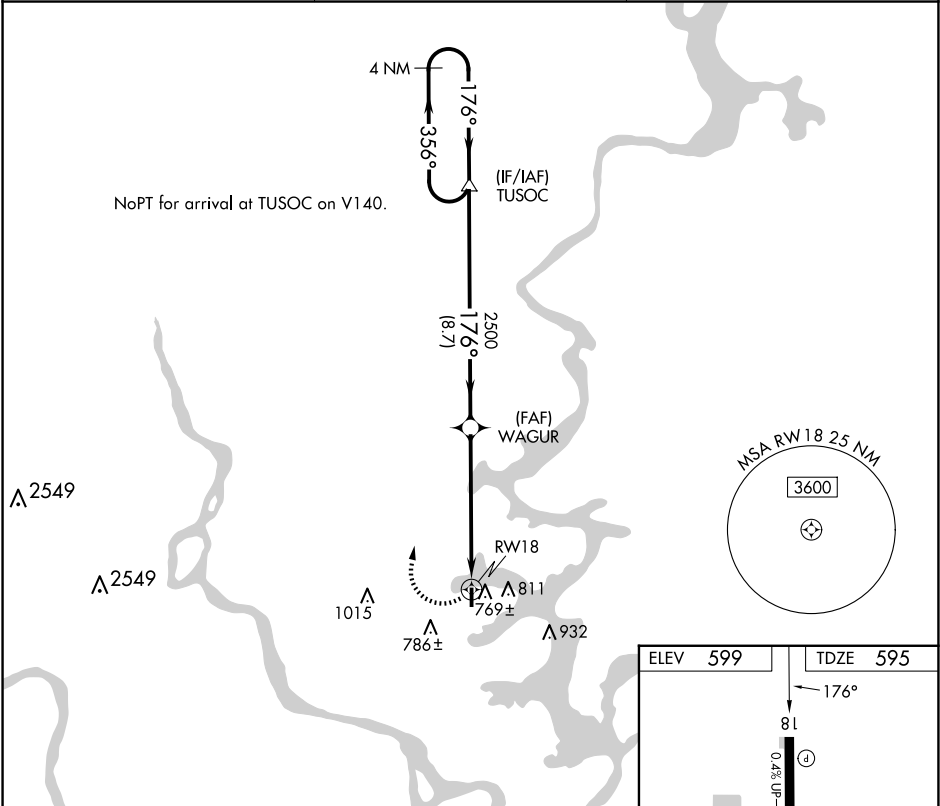
RNP APCH - GPS.

Procedure NA at night. Use Pryor altimeter setting.

Rwy 18 helicopter visibility reduction below 1 SM NA.

MISSED APPROACH: Climbing right turn to 2500 direct TUSOC and hold.

H71 AWOS-3PT 120.1	TULSA APP CON 119.1 360.825	CTAF 122.9
-----------------------	--------------------------------	---------------



4 NM Holding Pattern

TUSOC

WAGUR

2500

356°

176°

176°

2500

3.05°

TCH 37

8.7 NM

5.8 NM

RW18

2500

TUSOC

CATEGORY	A	B	C	D
RNAV MDA	1080-1	485 (500-1)	NA	NA
CIRCLING	1160-1	561 (600-1)	NA	NA

ELEV 599

TDZE 595

176°

81

0.4% UP

3401 X 60

36

MIRL Rwy 18-36