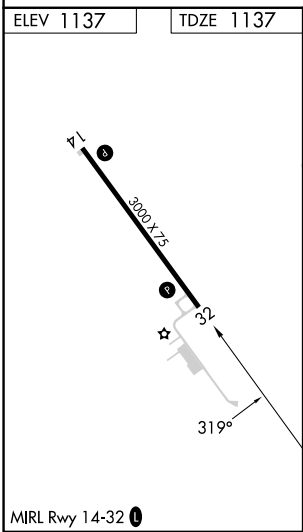
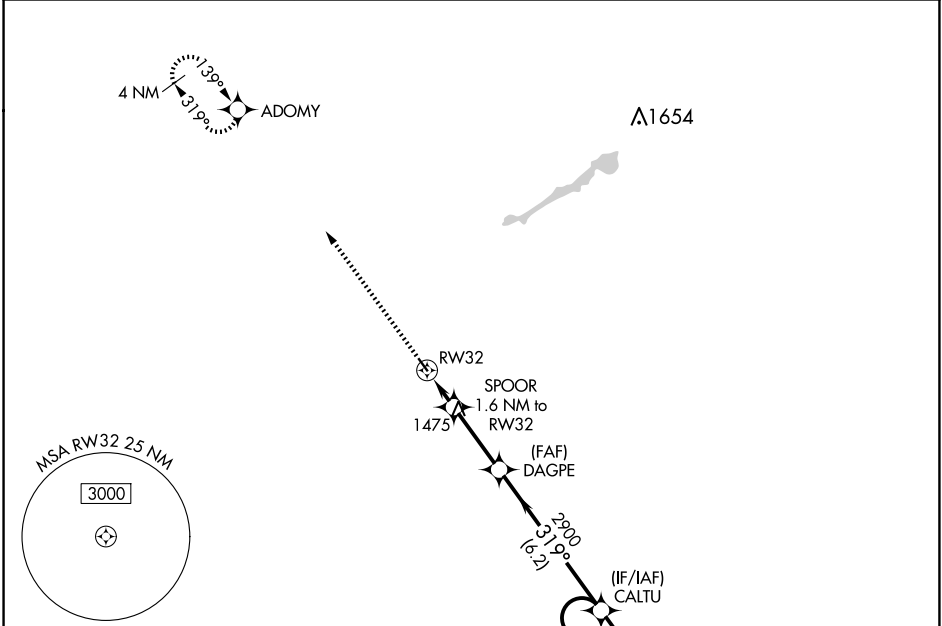


APP CRS	Rwy Idg	3000
319°	TDZE	1137
	Apt Elev	1137

RNAV (GPS) RWY 32

FERTILE MUNI (D14)

RNP APCH - GPS.		MISSED APPROACH: Climb to 3200 direct ADOMY and hold.
▼ ▲NA	Use Mahanomen altimeter setting.	
3N8 AWOS-3PT 121.125	GRAND FORKS APP CON ★ 118.1 318.1	UNICOM 122.8 (CTAF) 0



3200	ADOMY	VGSI and descent angles not coincident (VGSI Angle 3.70/TCH 31).				CALTU
		SPOOR 1.6 NM to RW32	≤ 3.70° TCH 40	DAGPE		4 NM Holding Pattern
		RW32				139° → 6000 ← 319° 3200
		1.6 NM	2.8 NM	6.2 NM		
CATEGORY	A	B	C	D		
LNAV MDA	1700-1	563 (600-1)	NA			
CIRCLING	1700-1 563 (600-1)	1760-1 623 (700-1)	NA			

NC-1, 10 JUL 2025 to 07 AUG 2025

NC-1, 10 JUL 2025 to 07 AUG 2025