

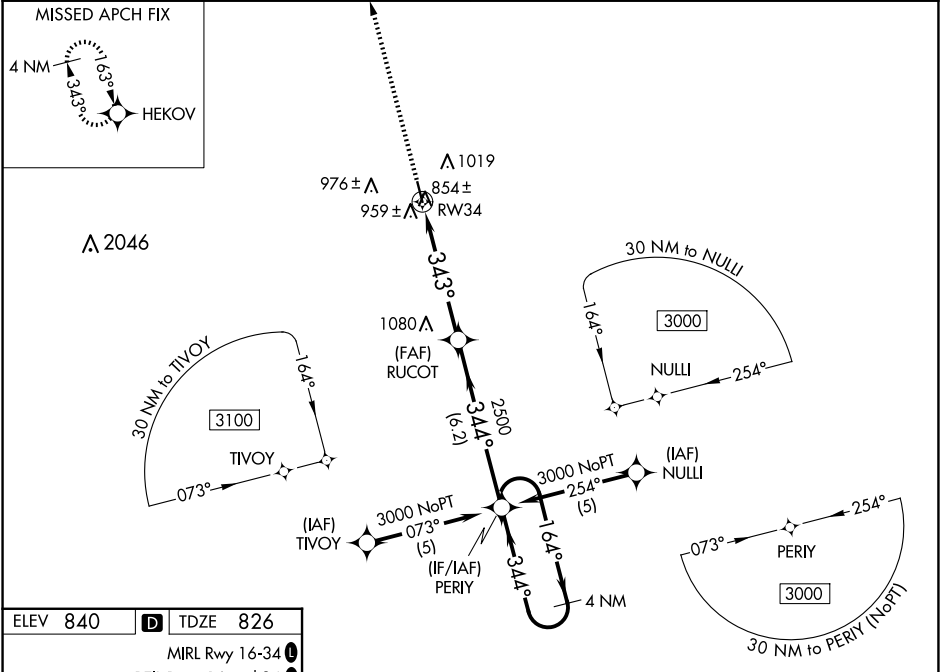
WAAS CH 45901 W34A	APP CRS 343°	Rwy Idg TDZE Apt Elev	4400 826 840
--	------------------------	-----------------------------	---

RNAV (GPS) RWY 34

HIGGINSVILLE INDUSTRIAL MUNI (HIG)

RNP APCH - GPS.	MISSED APPROACH: Climb to 3000 direct HEKOV and hold.
Baro-VNAV NA. Use Whiteman Air Force Base altimeter setting; when not received, use Kansas City/Lee's Summit Rgnl altimeter setting: increase LPV DA to 1190 feet and all visibilities ¼ SM; increase LNAV/VNAV DA to 1329 feet and all visibilities ¼ SM; increase all MDAs 60 feet and LNAV and Circling visibility Cats C and D ¼ SM.	

WHITEMAN APP CON ★ 127.45 284.0	UNICOM 122.8 (CTAF) 0
---	---------------------------------



ELEV 840	D	TDZE 826
MIRL Rwy 16-34		
REIL Rws 16 and 34		

