

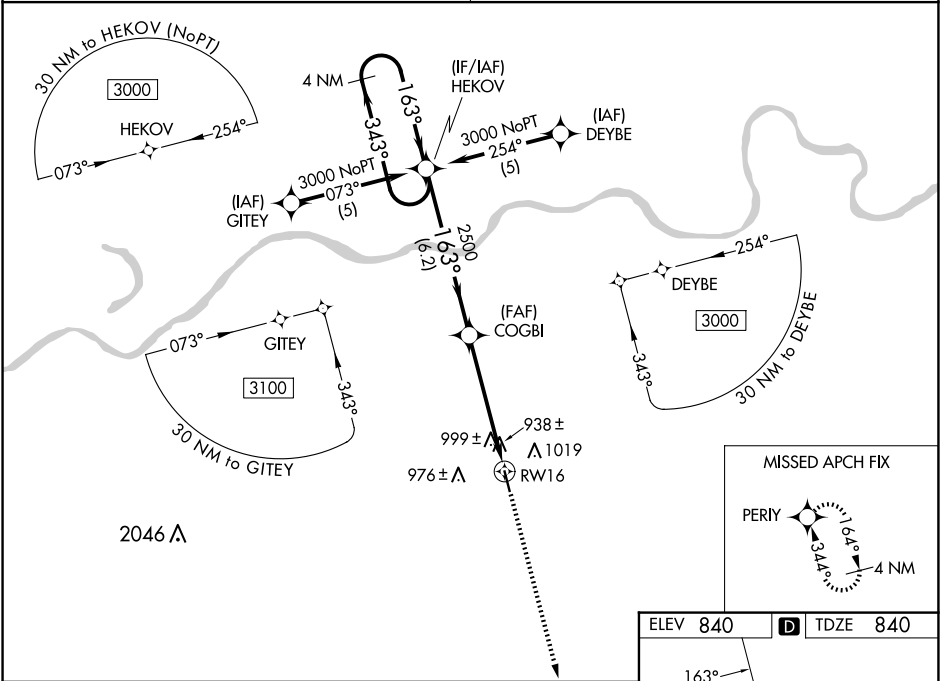
WAAS CH 86601 W16A	APP CRS 163°	Rwy Idg TDZE Apt Elev	4400 840 840
--	------------------------	-----------------------------	---

RNAV (GPS) RWY 16

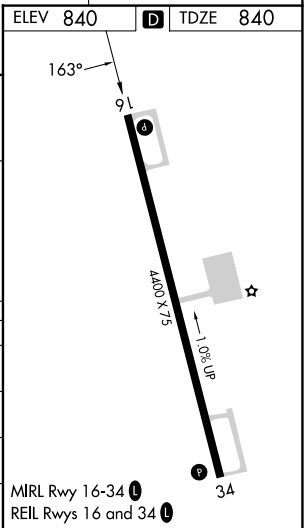
HIGGINSVILLE INDUSTRIAL MUNI (HIG)

RNP APCH - GPS.	
<div><div>▼</div><div>NA</div></div> Baro-VNAV NA. Use Whiteman Air Force Base altimeter setting; when not received, use Kansas City/Lee's Summit Rgnl altimeter setting; increase LPV DA to 1293 feet and all visibilities ¼ SM; increase LNAV/VNAV DA to 1410 feet; increase all MDAs 60 feet, LNAV visibility Cat C ½ SM and Circling visibility Cats C and D ¼ SM.	MISSED APPROACH: Climb to 3000 direct PERIY and hold.

WHITEMAN APP CON ★ 127.45 284.0	UNICOM 122.8 (CTAF) 0
---	---------------------------------



4 NM Holding Pattern		HEKOV	COGBI	3000	PERIY
3000		343°	163°	2500	RWY 16
GP 3.00°		TCH 31			
		6.2 NM			
		5 NM			
CATEGORY		A	B	C	D
LPV DA		1247-1½ 407 (500-1½)			
LNAV/VNAV DA		1364-2 524 (600-2)			
LNAV MDA		1360-1 520 (600-1)	1360-1½ 520 (600-1½)	1360-1¾ 520 (600-1¾)	
CIRCLING		1440-1 600 (600-1)	1440-1½ 600 (600-1½)	1460-2 620 (700-2)	



NC-3, 10 JUL 2025 to 07 AUG 2025

NC-3, 10 JUL 2025 to 07 AUG 2025