

MIAMI DEP CON  
125.5 354.1  
AWOS-3  
118.375  
CTAF  
122.8

TOP ALTITUDE:  
ASSIGNED BY ATC

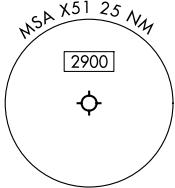
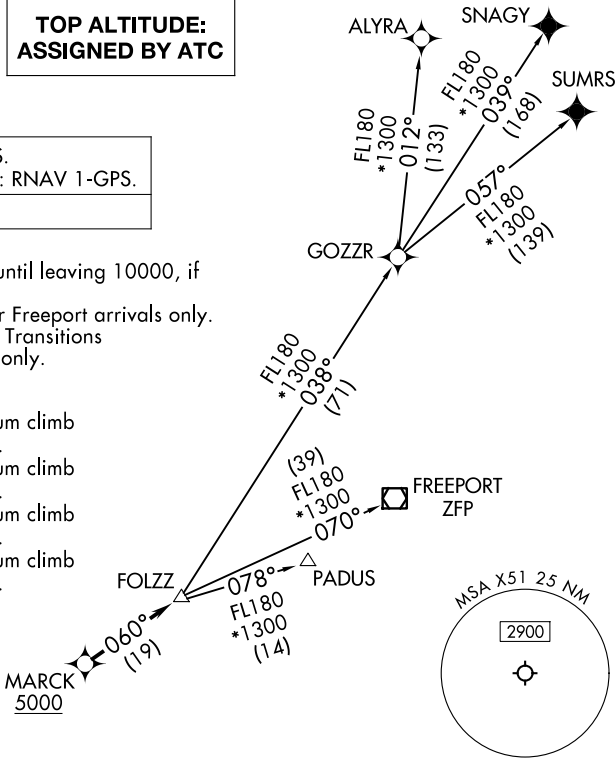
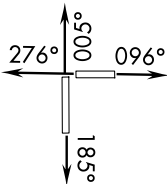
RNAV-1 DME/DME/IRU or GPS.  
SNAGY and SUMRS Transitions: RNAV 1-GPS.

RADAR required.

NOTE: Jet aircraft only.  
NOTE: Accelerate to 250K until leaving 10000, if  
unable, advise ATC.  
NOTE: PADUS Transition for Freeport arrivals only.  
NOTE: SNAGY and SUMRS Transitions  
for European traffic only.

TAKEOFF MINIMUMS

- Rwy 10: Standard with minimum climb  
of 500’/NM to 2400.  
Rwy 18: Standard with minimum climb  
of 500’/NM to 1800.  
Rwy 28: Standard with minimum climb  
of 500’/NM to 1900.  
Rwy 36: Standard with minimum climb  
of 500’/NM to 2200.



NOTE: Chart not to scale.



DEPARTURE ROUTE DESCRIPTION

- TAKEOFF RUNWAY 10: Climb on heading 096° or as assigned by ATC for RADAR  
vectors to cross MARCK at or above 5000, thence. . .  
TAKEOFF RUNWAY 18: Climb on heading 185° or as assigned by ATC for RADAR  
vectors to cross MARCK at or above 5000, thence. . .  
TAKEOFF RUNWAY 28: Climb on heading 276° or as assigned by ATC for RADAR  
vectors to cross MARCK at or above 5000, thence. . .  
TAKEOFF RUNWAY 36: Climb on heading 005° or as assigned by ATC for RADAR  
vectors to cross MARCK at or above 5000, thence. . .

. . .on track 060° to FOLZZ, then on assigned transition. Maintain ATC assigned  
altitude, expect filed altitude within 10 minutes after departure.

- ALYRA TRANSITION (FOLZZ3.ALYRA)  
FREEPORT TRANSITION (FOLZZ3.ZFP)  
GOZZR TRANSITION (FOLZZ3.GOZZR)  
PADUS TRANSITION (FOLZZ3.PADUS)  
SNAGY TRANSITION (FOLZZ3.SNAGY)  
SUMRS TRANSITION (FOLZZ3.SUMRS)

SE-3, 10 JUL 2025 to 07 AUG 2025

SE-3, 10 JUL 2025 to 07 AUG 2025