

MIAMI DEP CON 125.5 354.1 AWOS-3 118.375	<b>TOP ALTITUDE: ASSIGNED BY ATC</b>	RNAV 1 - DME/DME/IRU or GPS.  RADAR required.
---	--	---

NOTE: For turbo-props/props filed at or above 13000.

TAKEOFF MINIMUMS

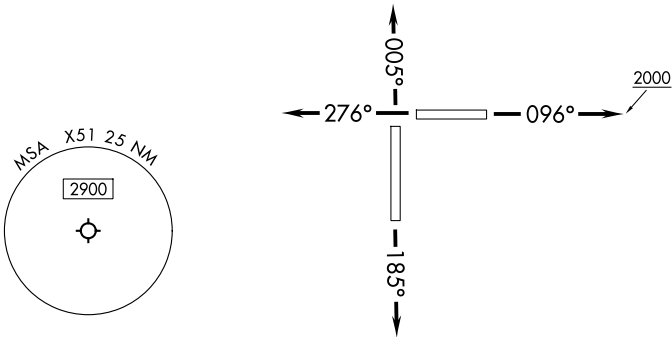
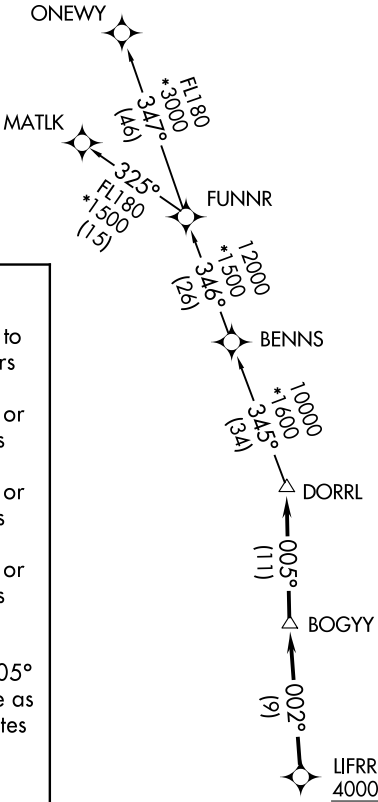
Rwy 10: Standard with minimum climb of 500'/NM to 2500.  
Rwys 18, 28: Standard with minimum climb of 500'/NM to 1900.  
Rwy 36: Standard with minimum climb of 500'/NM to 2200.

DEPARTURE ROUTE DESCRIPTION

TAKEOFF RUNWAY 10: Climb on heading 096° to 2000, or as assigned by ATC for RADAR vectors to cross LIFRR at or above 4000, thence. . . .  
TAKEOFF RUNWAY 18: Climb on heading 185° or as assigned by ATC for RADAR vectors to cross LIFRR at or above 4000, thence. . . .  
TAKEOFF RUNWAY 28: Climb on heading 276° or as assigned by ATC for RADAR vectors to cross LIFRR at or above 4000, thence. . . .  
TAKEOFF RUNWAY 36: Climb on heading 005° or as assigned by ATC for RADAR vectors to cross LIFRR at or above 4000, thence. . . .

. . . .on track 002° to BOGY, then on track 005° to DORRL then on (transition), maintain altitude as assigned by ATC, expect filed altitude 10 minutes after departure.

MATLK TRANSITION (DORRL2.MATLK)  
ONEWY TRANSITION (DORRL2.ONEWY)



NOTE: Chart not to scale.

SE-3, 10 JUL 2025 to 07 AUG 2025

SE-3, 10 JUL 2025 to 07 AUG 2025