

WAAS CH 93715 W36A	APP CRS 001°	Rwy Idg 5002 TDZE 835 Apt Elev 845
--	------------------------	---

RNAV (GPS) RWY 36

NORTH CENTRAL MISSOURI RGNL (M08)

RNP APCH.

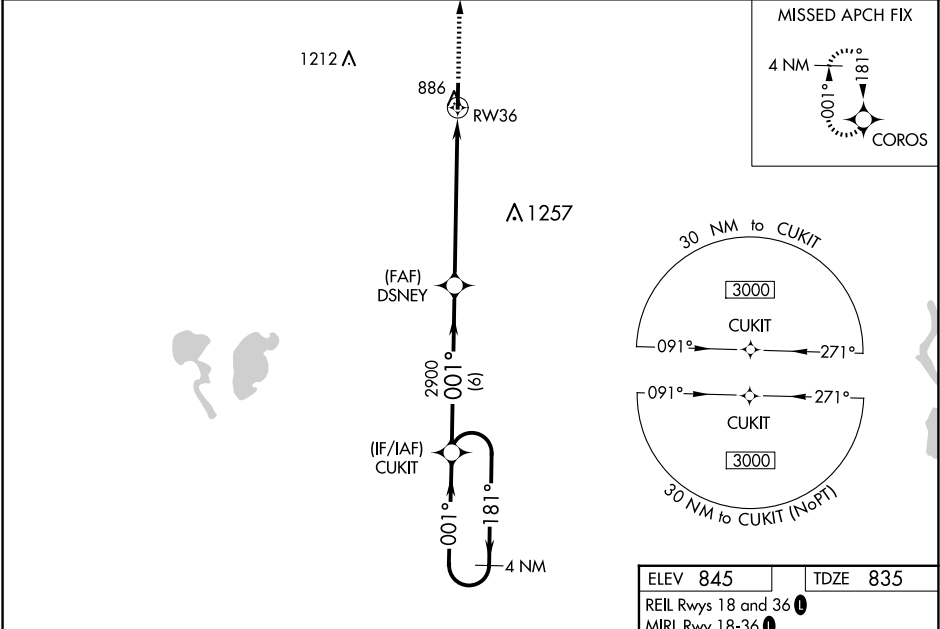
▼

▲ NA

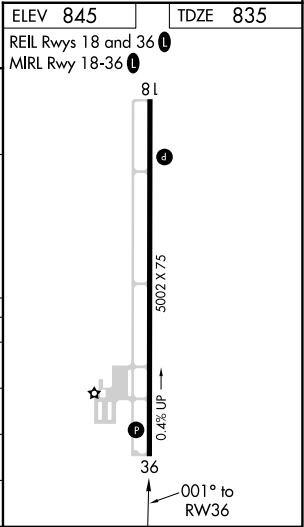
For uncompensated Baro-VNAV systems, LNAV/VNAV NA below -16°C or above 54°C. Baro-VNAV and VDP NA when using Kirksville altimeter setting. When local altimeter setting not received, use Kirksville altimeter setting and increase all LPV and LNAV/VNAV DA to 1169 feet and increase all visibility ½ mile; increase all MDA 100 feet, increase LNAV Cat C/D visibility ¼ mile, and Circling Cat C visibility ½ mile. Rwy 36 helicopter visibility reduction below ¾ SM NA.

MISSED APPROACH:
Climb to 3000 direct
COROS and hold.

AWOS-2 118.425	KANSAS CITY CENTER 125.25 235.975	CTAF 122.9 0
--------------------------	---	------------------------



4 NM Holding Pattern		CUKIT	DSNEY	3000	COROS
3000		181°	001°	001°	2900
GP 3.00°		TCH 40	2900	*1.4 NM to RW36	*LNAV only
6 NM		5 NM	1.4 NM		
CATEGORY	A	B	C	D	
LPV DA	1085-1		250 (300-1)		
LNAV/ VNAV DA	1085-1		250 (300-1)		
LNAV MDA	1300-1	465 (500-1)	1300-1 3/8	465 (500-1 3/8)	
CIRCLING	1300-1	455 (500-1)	1300-1 1/2	1400-2	555 (600-2)



NC-3, 10 JUL 2025 to 07 AUG 2025

NC-3, 10 JUL 2025 to 07 AUG 2025