

WAAS CH 56538 W18A	APP CRS 181°	Rwy Idg 5002 TDZE 845 Apt Elev 845
--	------------------------	---

RNAV (GPS) RWY 18

NORTH CENTRAL MISSOURI RGNL (MO8)

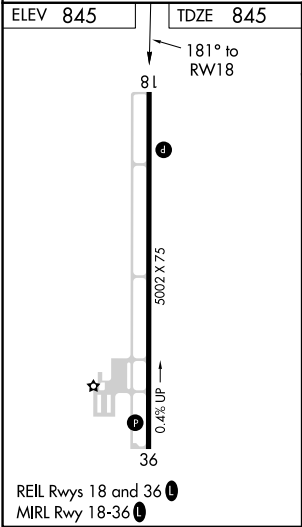
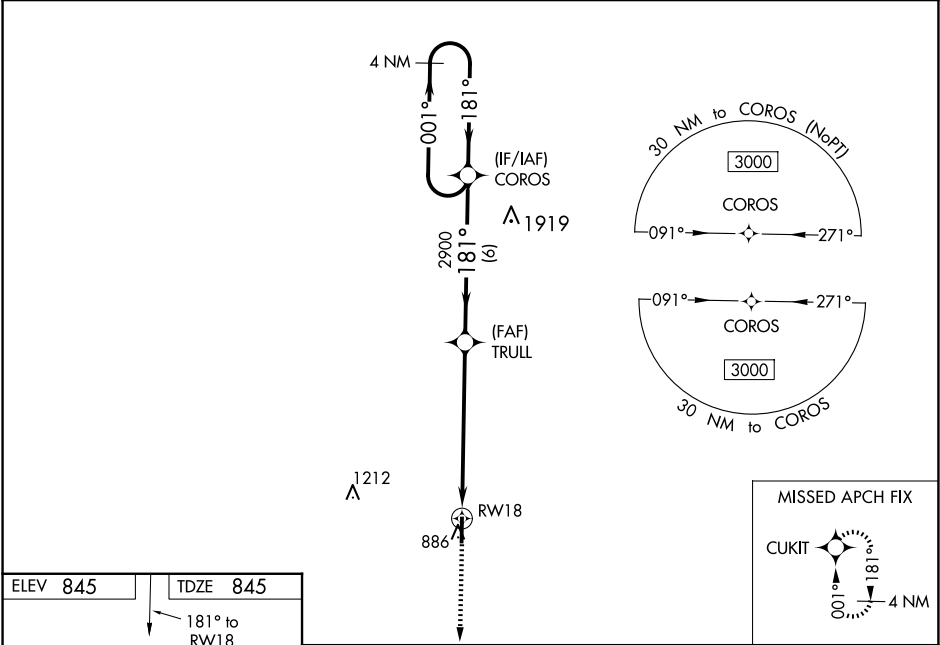
▼

▲ NA

For uncompensated Baro-VNAV systems, LNAV/VNAV NA below -16°C or above 54°C. Baro-VNAV and VDP NA when using Kirksville altimeter setting. When local altimeter setting not received, use Kirksville altimeter setting and increase LPV and LNAV/VNAV DA all Cats to 1179 feet and increase visibility 1⁄8 mile all Cats; increase all MDA 100 feet and increase LNAV Cat C/D visibility 3⁄8 mile and Circling Cat C visibility 1⁄4 mile. Rwy 18 helicopter visibility reduction below 3⁄4 SM NA.

MISSED APPROACH:
Climb to 3000 direct
CUKIT and hold.

AWOS-2 118.425	KANSAS CITY CENTER 125.25 235.975	CTAF 122.9 0
--------------------------	---	------------------------



3000

↑

CUKIT

✦

COROS

4 NM Holding Pattern

*LNAV only

*1.5 NM to RW18

TRULL

2900

001° →

← 181°

3000

GP 3.00°

TCH 40

RW18

181°

2900

1.5

4.8 NM

6 NM

CATEGORY	A	B	C	D
LPV DA	1095-1		250 (300-1)	
LNAV/VNAV DA	1095-1		250 (300-1)	
LNAV MDA	1360-1	515 (600-1)	1360-1 ³ / ₈	515 (600-1 ³ / ₈)
CIRCLING	1360-1	515 (600-1)	1360-1 ¹ / ₂ 515 (600-1 ¹ / ₂)	1400-2 555 (600-2)

NC-3, 10 JUL 2025 to 07 AUG 2025

NC-3, 10 JUL 2025 to 07 AUG 2025