

APP CRS	Rwy Idg	<b>4300</b>
<b>228°</b>	TDZE	<b>2864</b>
	Apt Elev	<b>2869</b>

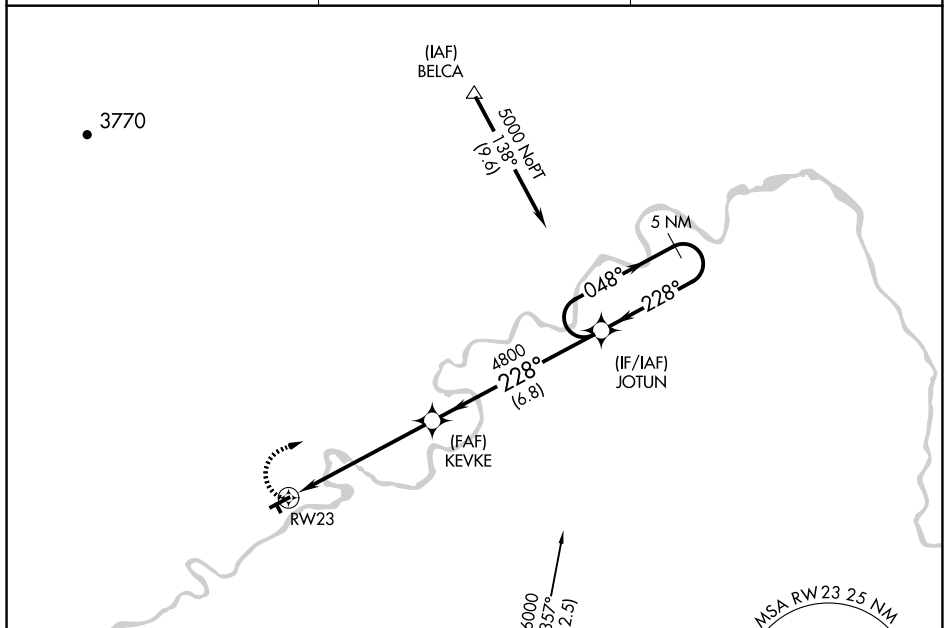
# RNAV (GPS) RWY 23

## FORT BENTON (79S)

**T** DME/DME RNP-0.3 NA. Procedure NA at night. When local  
**A** altimeter setting not received, use Great Falls altimeter setting  
and increase all MDAs 200 feet and LNAV visibility Cat C  $\frac{1}{2}$  SM,  
and Circling visibility Cat C  $\frac{3}{4}$  SM. Circling NA to Rwy 14-32.

**MISSED APPROACH:** Climbing right turn to 5000 direct JOTUN and hold.

AWOS-3PT <b>121.125</b>	SALT LAKE CENTER <b>133.4 285.4</b>	UNICOM <b>122.8 (CTAF) ①</b>
----------------------------	--	---------------------------------



ELEV 2869		TDZE 2864
-----------	--	-----------

