

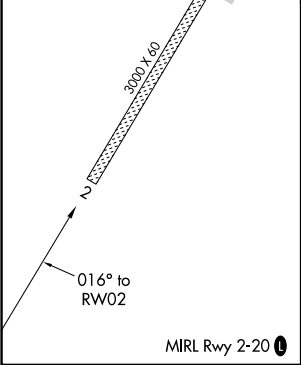
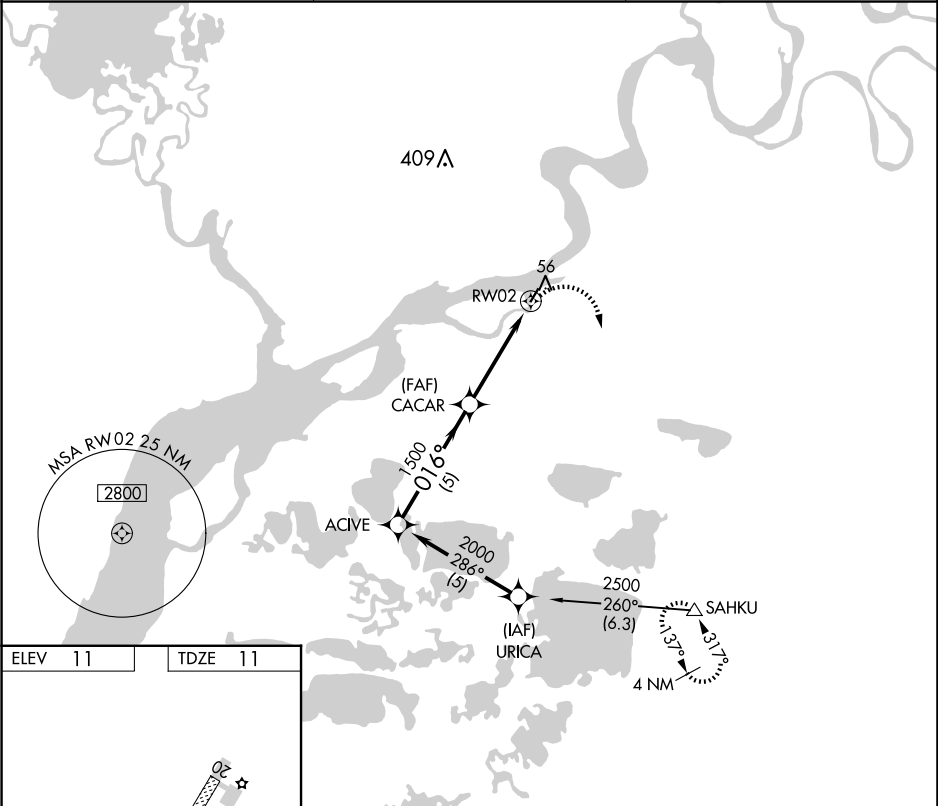
APP CRS	Rwy Idg	3000
016°	TDZE	11
	Apt Elev	11

RNAV (GPS) RWY 2

NAPASKIAK (PKA) (PAPK)

RNP APCH-GPS.	MISSED APPROACH: Climbing right turn to 2500 direct SAHKU WP and hold.
NA Use Bethel altimeter setting.	

BET/PABE ASOS 135.45	ANCHORAGE CENTER 125.2 372.0	CTAF 122.9
-------------------------	---------------------------------	---------------



Procedure Turn NA		2500	SAHKU
ACIVE			
2000		CACAR	
016°		3.17° TCH 40	
1500		1.1 NM to RW02	
5 NM		3.2 NM	1.1
CATEGORY	A	B	C
LNAV MDA	420-1	409 (500-1)	NA
CIRCLING	440-1	580-1	NA
	429 (500-1)	569 (600-1)	