

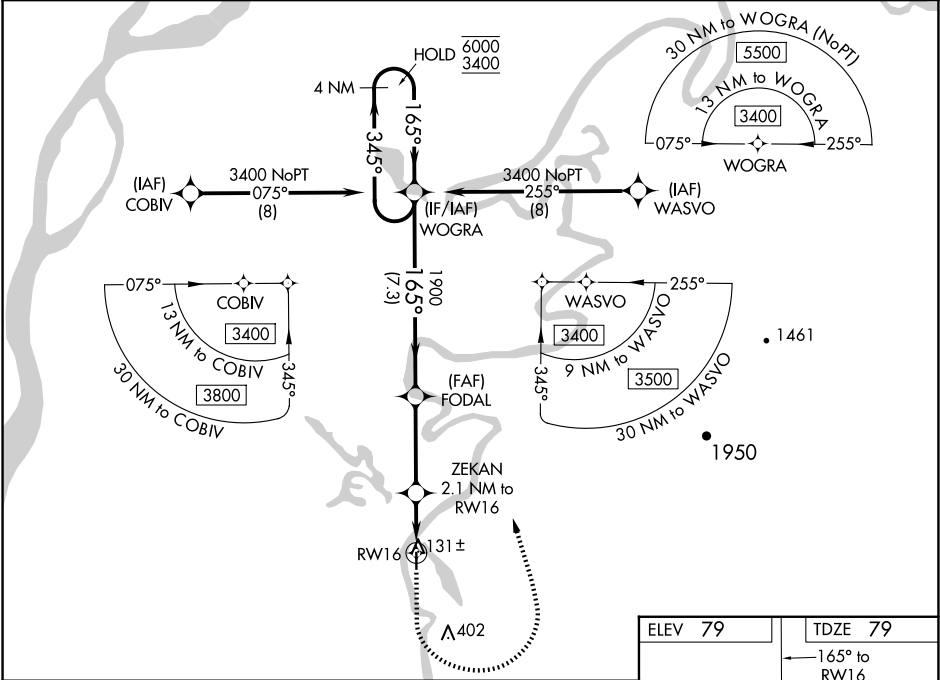
WAAS CH 45610 W16A	APP CRS 165°	Rwy Idg TDZE 79 Apt Elev 79
--	------------------------	---

RNAV (GPS) RWY 16

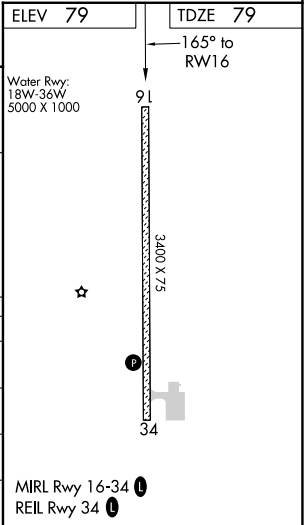
SHAGELUK (SHX) (PAHX)

RNP APCH.	MISSED APPROACH: Climb to 1000 then climbing left turn to 3400 direct WOGRA and hold.
<div><div>▼</div><div>▲</div></div> For uncompensated Baro-VNAV systems, LNAV/VNAV NA below -25°C or above 54°C. Circling NA for Cats C and D east of Rwy 16-34.	

AWOS-3P 121.575	ANCHORAGE CENTER 135.7 335.5	KENAI RADIO 122.4	UNICOM 122.8 (CTAF) 0
---------------------------	--	-----------------------------	---------------------------------



<div>4 NM Holding Pattern</div> <div>6000 ← 345° 3400 → 165°</div> <div>GP 3.00° TCH 40</div>		<div>WOGRA</div>		<div>FODAL</div> <div>1900</div>		<div>1000 ↑</div> <div>3400 ↷</div> <div>WOGRA ✧</div>		<div>ZEKAN 2.1 NM to RW16</div> <div>*LNAV only</div>	
		<div>7.3 NM</div>		<div>3.5 NM</div>		<div>0.7</div>		<div>*1.4 NM to RW16</div> <div>RW16</div>	
CATEGORY		A		B		C		D	
LPV DA				329-1 250 (300-1)					
LNAV/ VNAV DA				329-1 250 (300-1)					
LNAV MDA				400-1 321 (400-1)					
CIRCLING		460-1 381 (400-1)		540-1 461 (500-1)		540-1½ 461 (500-1½)		800-2¼ 721 (800-2¼)	



AK, 12 JUN 2025 to 07 AUG 2025

AK, 12 JUN 2025 to 07 AUG 2025