

APP CRS	Rwy Idg	2932
283°	TDZE	939
	Apt Elev	939

RNAV (GPS) RWY 28
FALWELL (W24)

T
A NA

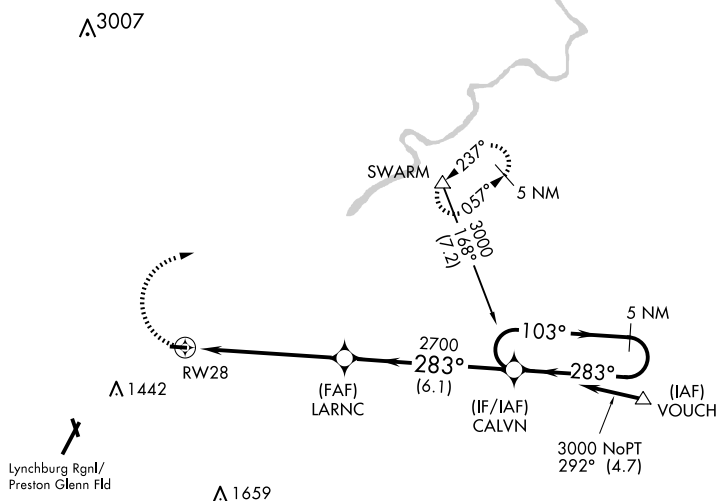
DME/DME RNP-0.3 NA. Use Lynchburg Regional/Preston Glenn Fld altimeter setting, when not received use Farmville altimeter setting and increase all MDA 160 feet. Procedure NA at night.

MISSED APPROACH: Climbing right turn to 3500 direct SWARM and hold.

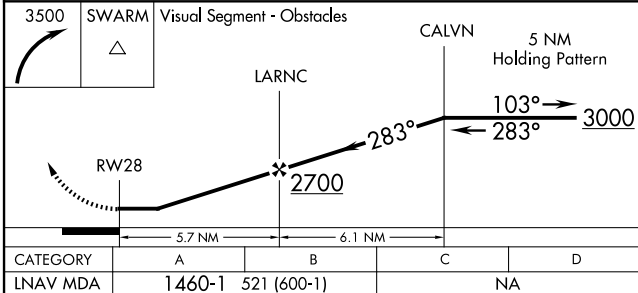
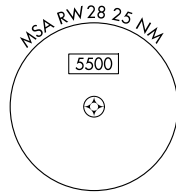
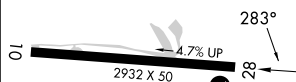
LYH ASOS
119.8

ROANOKE APP CON
135.0 254.325

UNICOM
123.0 (CTAF)



ELEV 939		TDZE 939
----------	--	----------



MIRL Rwy 10-28

LYNCHBURG, VIRGINIA
Orig-B 07JAN16

37°23'N-79°07'W

FALWELL (W24)
RNAV (GPS) RWY 28

NE-3, 10 JUL 2025 to 07 AUG 2025