

APP CRS
121°

Rwy Idg
TDZE
Apt Elev

3214
64
64

RNAV (GPS) RWY 12

GOODEN AIRPARK (RJD)

RNP APCH - GPS.

▼
NA

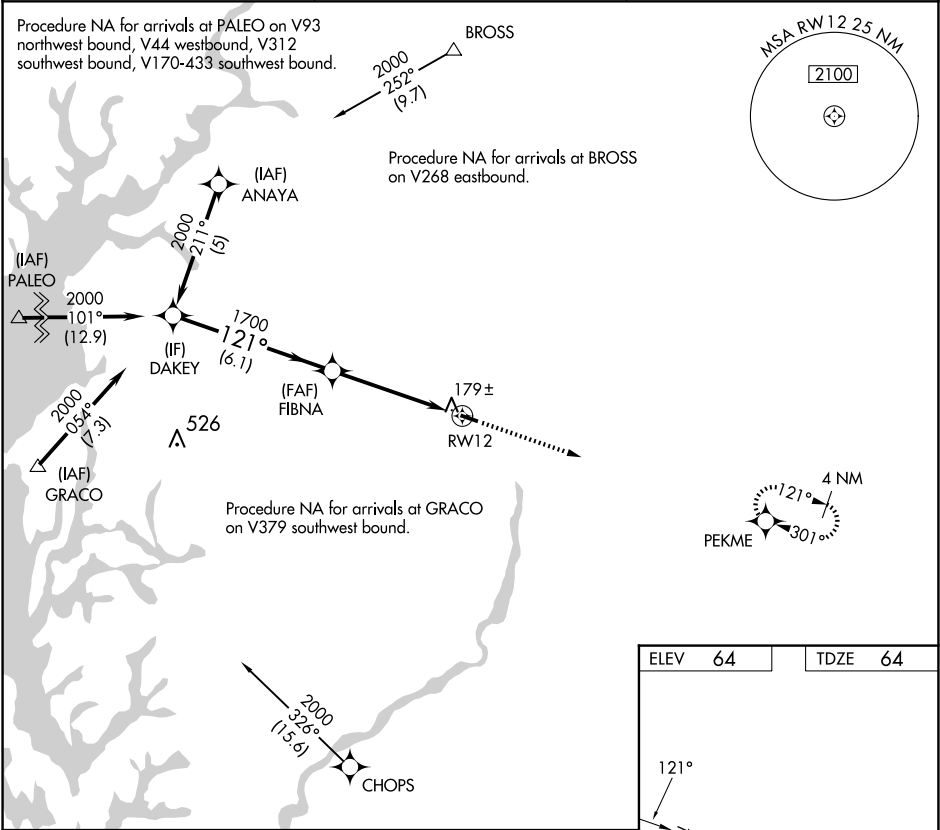
Procedure NA at night. Use Easton altimeter setting: when not received, procedure NA. Rwy 12 helicopter visibility reduction below 1 SM NA.

MISSED APPROACH: Climb to 2000 direct PEKME and hold.

ESN AWOS-3PT
124.475

POTOMAC APP CON
124.55 317.425

UNICOM
122.8 (CTAF) 0



DAKEY

2000

FIBNA

1700

RW12

3.04° TCH 40

6.1 NM

5 NM

2000

PEKME

CATEGORY	A	B	C	D
LNAV MDA	480-1	416 (500-1)	NA	
CIRCLING	520-1	456 (500-1)	NA	

ELEV 64

TDZE 64

121°

3214 X 50

30

LIRL Rwy 12-30 0

REIL Rwy 12 and 30 0