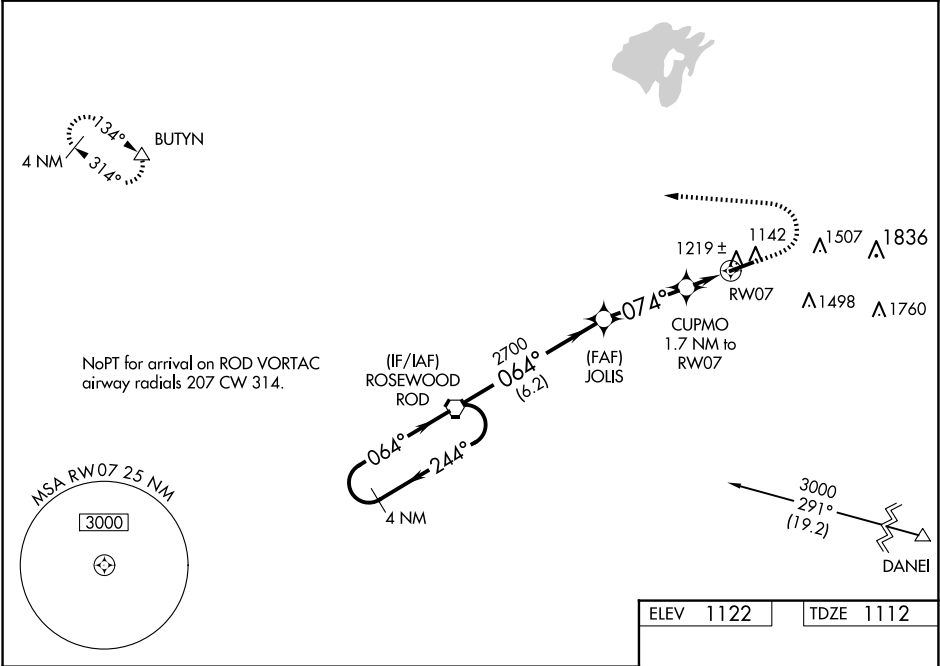


WAAS CH 42628 W07A	APP CRS 074°	Rwy Idg TDZE 1112 Apt Elev 1122
--	------------------------	---

RNAV (GPS) RWY 7
BELLEFONTAINE RGNL (ED.J)

<p>NA</p> <p>For uncompensated Baro-VNAV systems, LNAV/VNAV NA below -17°C (2°F) or above 37°C (98°F). DME/DME RNP-0.3 NA. VDP and Baro-VNAV NA with James M. Cox Dayton Intl altimeter setting. When local altimeter setting not received, use James M. Cox Dayton Intl altimeter setting: increase LPV DA to 1456 feet, LNAV/VNAV DA to 1598 feet, and all MDAs 100 feet, and increase LPV and LNAV/VNAV all Cats visibility ¼ SM, LNAV Cats C and D visibility ⅓ SM, and Circling Cat C visibility ½ SM and Cat D visibility ¼ SM.</p>	<p>MISSED APPROACH: Climb to 1600 then climbing left turn to 3000 direct BUTYN and hold.</p>
--	---

AWOS-3 118.075	COLUMBUS APP CON 134.45 294.5	UNICOM 122.8 (CTAF) 0
--------------------------	---	---------------------------------



4 NM Holding Pattern		ROD VORTAC		1600		3000		BUTYN △	
3000 ← 244° 064° →		064°		JOLIS 2700		CUPMO 1.7 NM to RW07		* LNAV only.	
GP 3.00° TCH 41		2700		074°		* 1.1 NM to RW07		RW07	
		6.2 NM		3.2 NM		0.7 NM		1.1 NM	
CATEGORY		A		B		C		D	
LPV DA		1362-7 ⁸ / ₈		250 (300-7 ⁸ / ₈)					
LNAV/ VNAV DA		1504-13 ⁸ / ₈		392 (400-13 ⁸ / ₈)					
LNAV MDA		1480-1		368 (400-1)					
CIRCLING		1620-1 498 (500-1)		1640-1 518 (600-1)		1860-2 738 (800-2)		1980-23 ⁴ / ₄ 858 (900-23 ⁴ / ₄)	

ELEV 1122	TDZE 1112
-----------	-----------

MIRL Rwy 7-25 0
REIL Rwy 7 and 25 0

EC-2, 10 JUL 2025 to 07 AUG 2025

EC-2, 10 JUL 2025 to 07 AUG 2025