

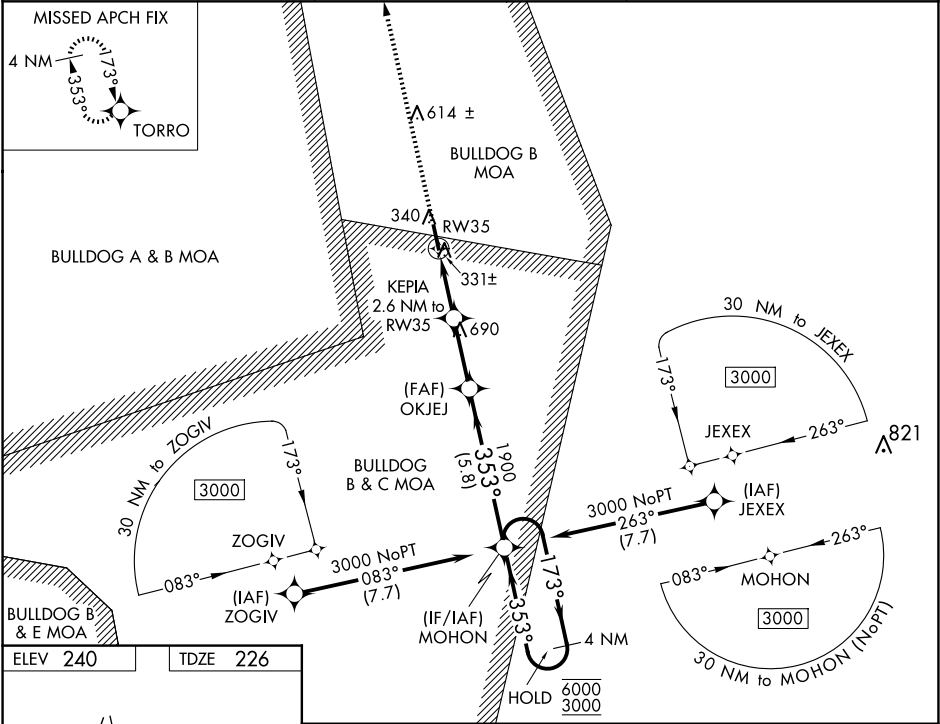
WAAS CH <b>53718</b> <b>W35A</b>	APP CRS <b>353°</b>	Rwy Idg TDZE <b>226</b> Apt Elev <b>240</b>	<b>5001</b>
--	------------------------	---	-------------

RNAV (GPS) RWY 35

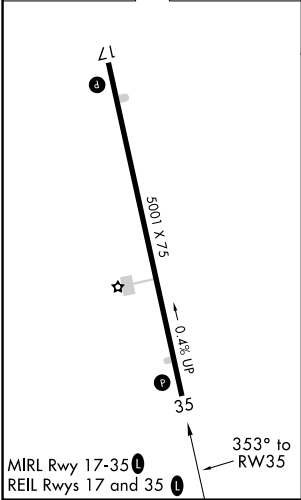
MILLEN (2J5)


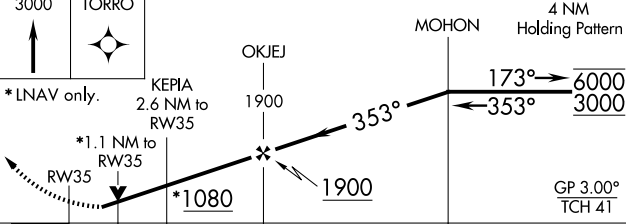

RNP APCH.	<div><div><div>▼</div><div>▲</div></div><div>Circling NA east of Rwy 17-35. For uncompensated Baro-VNAV systems, LNAV/VNAV NA below -15°C or above 54°C. Rwy 35 helicopter visibility reduction below ¾ SM NA. Circling Rwy 17 NA at night.</div></div>	MISSED APPROACH: Climb to 3000 direct TORRO and hold.
-----------	---	--

AWOS-3PT <b>120.2</b>	AUGUSTA APP CON * <b>126.8 270.3</b>	CTAF <b>122.90</b>
--------------------------	---	-----------------------



ELEV 240	TDZE 226
----------	----------



3000 ↑	TORRO 				
*LNAV only.		GP 3.00° TCH 41			
CATEGORY	A	B	C	D	
LPV DA	476-1		250 (300-1)		
LNAV/ VNAV DA	633-1½		407 (400-1½)		
LNAV MDA	600-1		374 (400-1)		
 CIRCLING	680-1 440 (500-1)	700-1 460 (500-1)	700-1½ 460 (500-1½)	1040-2½ 800 (800-2½)	