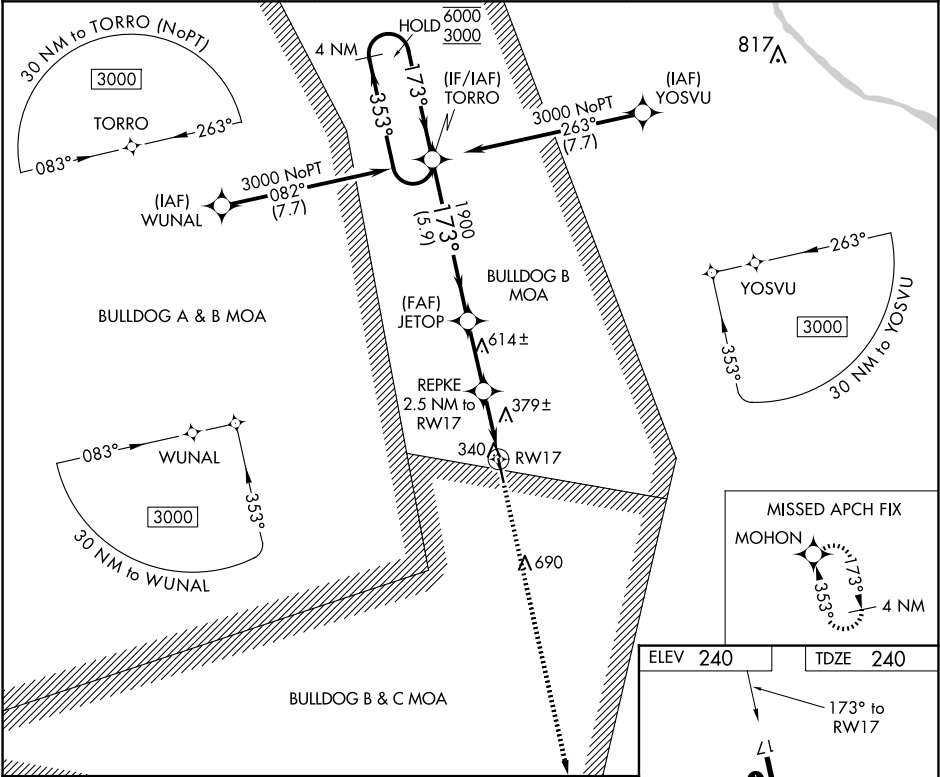


APP CRS	Rwy Idg	5001
173°	TDZE	240
	Apt Elev	240

RNAV (GPS) RWY 17
MILLEN (2J5)

RNP APCH.	MISSED APPROACH: Climb to 3000 direct MOHON and hold.
<div><div></div><div></div></div> <div>Circling NA east of Rwy 17-35. Rwy 17 helicopter visibility reduction below 1 SM NA. Straight-in and Circling Rwy 17 NA at night.</div>	

AWOS-3PT 120.2	AUGUSTA APP CON ★ 126.8 270.3	CTAF 122.9 0
-------------------	----------------------------------	-----------------



VGSI and descent angles not coincident (VGSI Angle 3.00/TCH 29).			
4 NM Holding Pattern TORRO			
<div><div>6000</div><div>3000</div><div>←353°</div><div>173°→</div><div>173°</div><div>JETOP</div><div>1900</div><div>3.00°</div><div>TCH 46</div><div>1080</div><div>REPKE</div><div>2.5 NM to RW17</div><div>RW17</div></div>			
<div><div>5.9 NM</div><div>2.6 NM</div><div>2.5 NM</div></div>			
CATEGORY	A	B	C
LNAB MDA	640-1	400 (400-1)	640-1½
CIRCLING	680-1	700-1	700-1½
	440 (500-1)	460 (500-1)	460 (500-1½)

