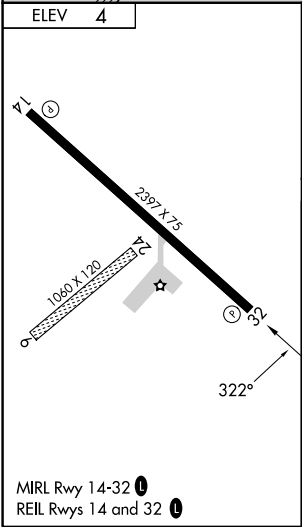
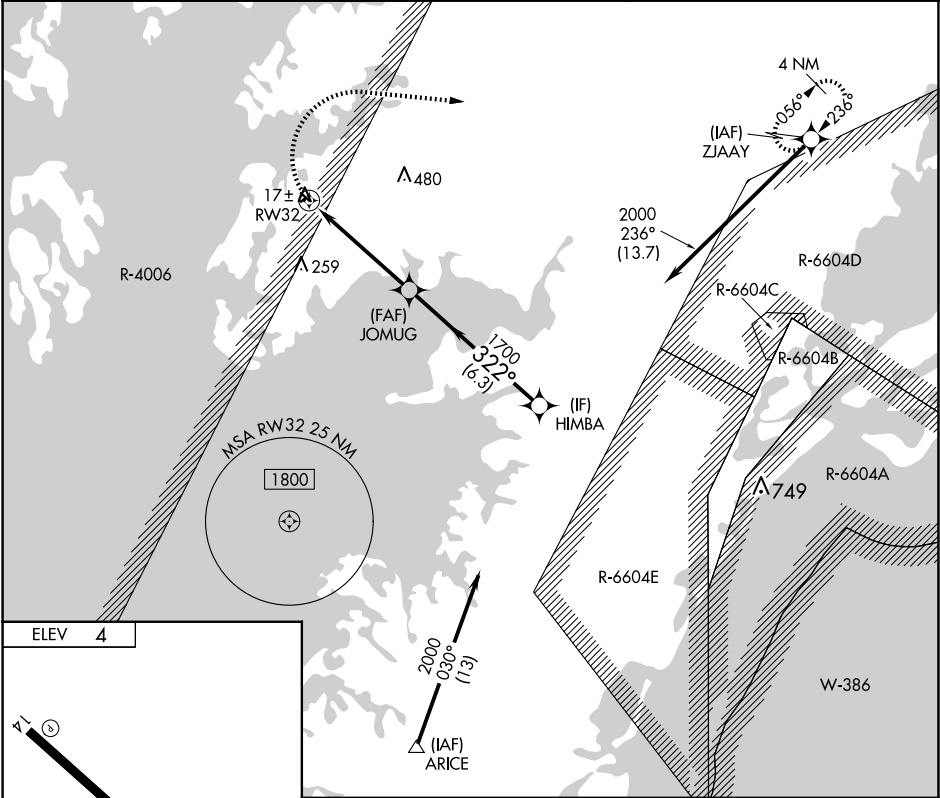


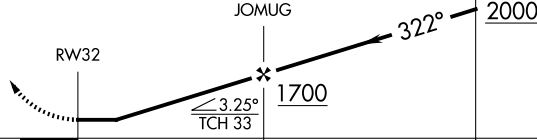



APP CRS <b>322°</b>	Rwy Ldg TDZE Apt Elev	<b>N/A</b> <b>N/A</b> <b>4</b>
------------------------	-----------------------------	--------------------------------------

**RNAV (GPS)-B**  
CRISFIELD-SOMERSET COUNTY (W41)

RNP APCH - GPS.		MISSED APPROACH: Climbing right turn to 2000 direct ZJAA Y and hold.
CIRCLING NA to Rwy 6 and 24. Procedure NA at night. Use WAL altimeter setting. Rwy 14, 32 helicopter visibility reduction below 1 SM NA.		
WAL ASOS <b>119.175</b>	PATUXENT APP CON ★ <b>127.95 314.0</b>	UNICOM <b>122.8 (CTAF) 0</b>



2000	ZJAA Y			
				
				
CATEGORY	A	B	C	D
 CIRCLING	520-1 516 (600-1)	560-1 556 (600-1)	NA	

NE-3, 10 JUL 2025 to 07 AUG 2025

NE-3, 10 JUL 2025 to 07 AUG 2025