

APP CRS  
237°

Rwy Ldg  
TDZE  
365  
Apt Elev  
365

RNAV (GPS) RWY 23

BEAVER (WBQ)(PAWB)

RNP APCH-GPS.

▼ Rwy 23 helicopter visibility reduction below ¾ SM NA.

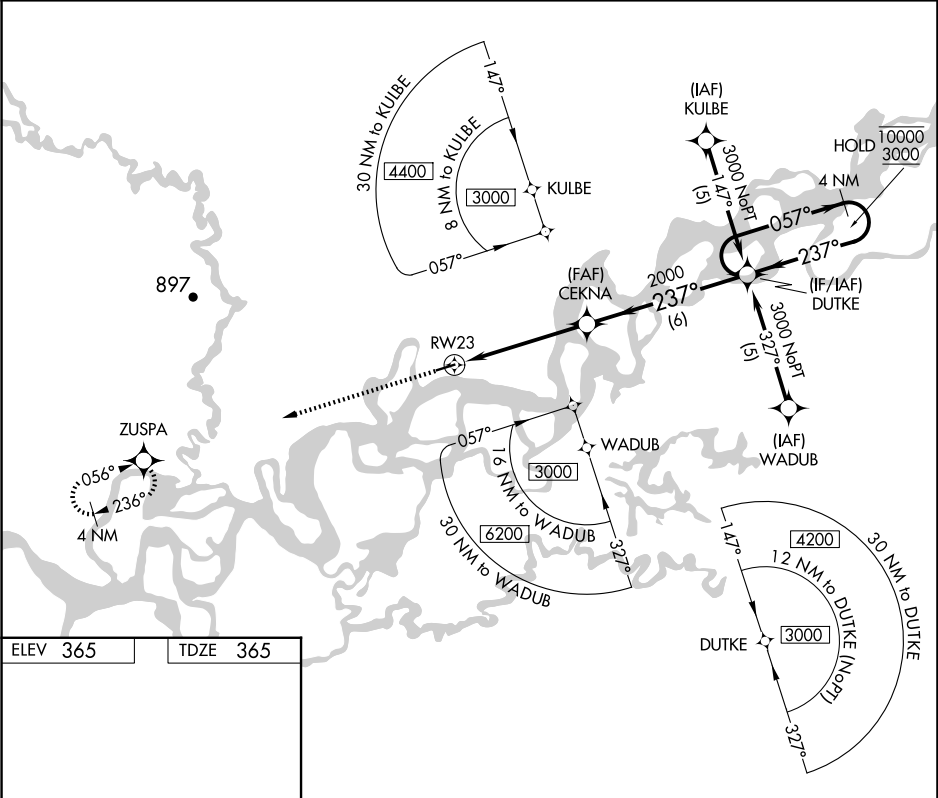
▲ NA Use Fort Yukon altimeter setting.

MISSED APPROACH: Climb to 3000 direct ZUSPA and hold.

FYU/PFYU AWOS-3P  
125.8

FAIRBANKS RADIO  
122.05 122.15

CTAF  
122.9 0



ELEV 365

TDZE 365

3000

ZUSPA

237°

3934 X 75

23

5

CEKNA

3.03° TCH 40

2000

237°

5 NM

6 NM

DUTKE

057° 10000

237° 3000

4 NM Holding Pattern

CATEGORY	A	B	C	D
LNAV MDA	940-1	575 (600-1)	940-1½ 575 (600-1½)	NA
CIRCLING	940-1	575 (600-1)	940-1½ 575 (600-1½)	NA

AK, 12 JUN 2025 to 07 AUG 2025

AK, 12 JUN 2025 to 07 AUG 2025