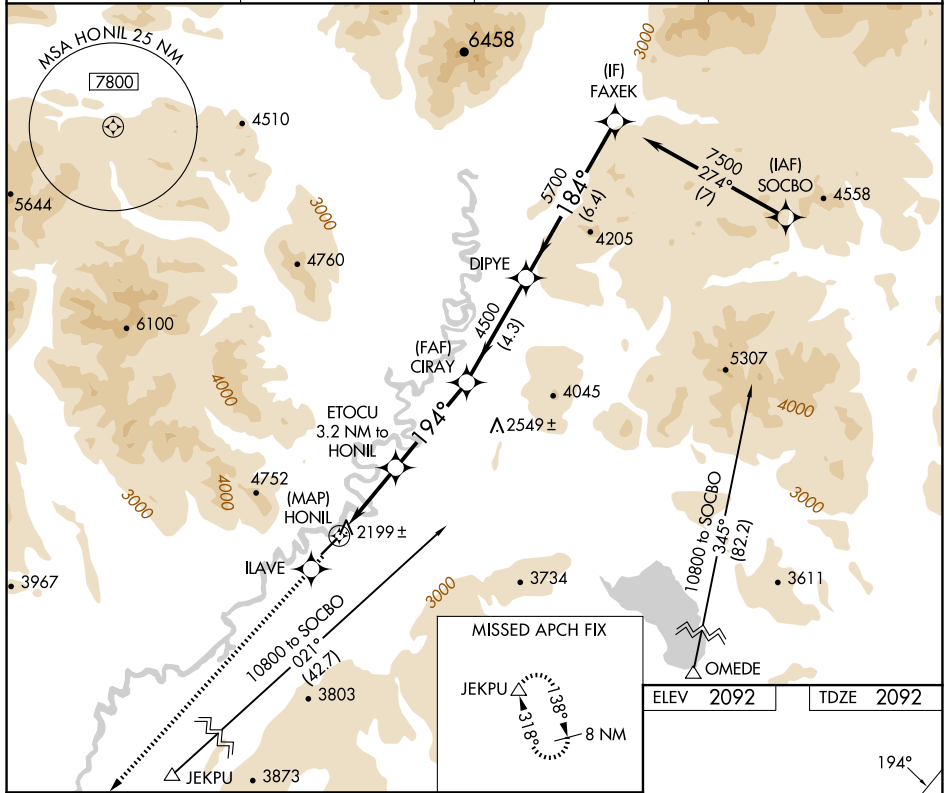


RNAV (GPS) RWY 20
ARCTIC VILLAGE (ARC)(PARC)

MISSED APPROACH: Climb to 10000
direct ILAVE and via 196° track to JEKPU
and hold, continue climb-in-hold to 10000.

CTAF
122.9 L

10000
↑
ILAVE
✦
Ir 196°
JEKPU
△

VGSI and descent angles not coincident
(VGSI Angle 3.00/TCH 27).

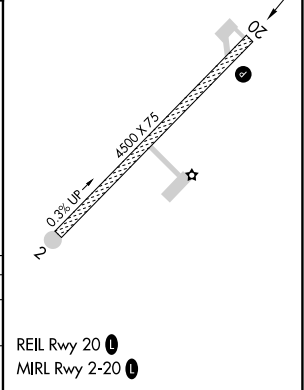
ETOUC 3.2 NM to HONIL
1.4 NM to HONIL
HONIL
CIRAY
DIPYE
FAXEY

7500
184°
5700
194°
4500
3200
3.06°
TCH 45

Procedure Turn NA

0.2 1.4 1.8 4 NM 4.3 NM 6.4 NM

CATEGORY	A	B	C	D
RNAV MDA	2600-1	508 (600-1)		NA
CIRCLING	2700-1 608 (700-1)	2900-1 808 (900-1)		NA



AK. 12 JUN 2025 to 07 AUG 2025