

APP CRS
088°

Rwy Ldg
TDZE
Apt Elev
N/A
N/A
110

RNAV (GPS)-A

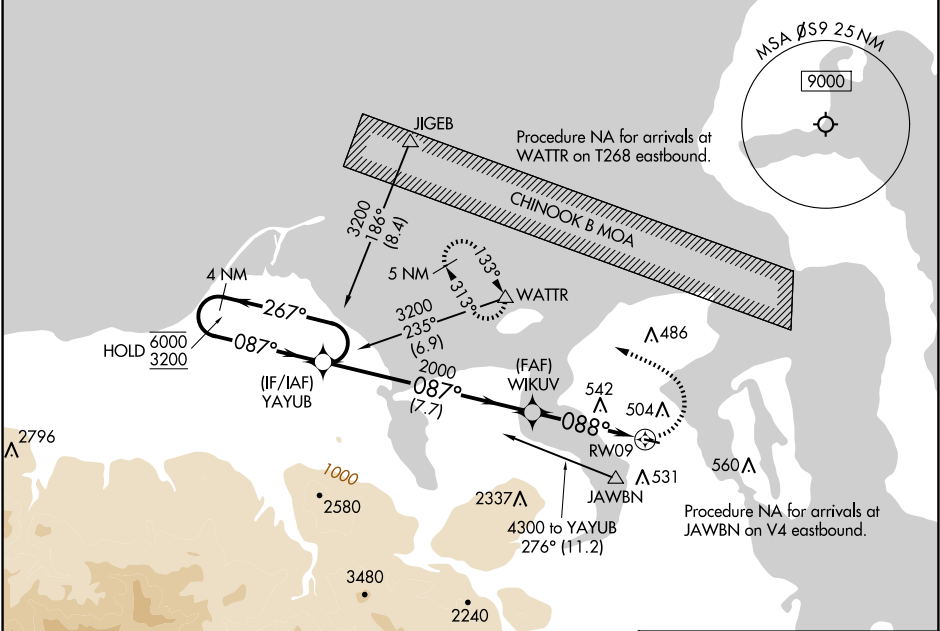
JEFFERSON COUNTY INTL (ØS9)

▼
▲

Procedure NA at night. Rwy 9, 27 helicopter visibility reduction below 1 SM NA.

MISSED APPROACH: Climbing left turn to 5400 direct WATTR and hold, continue climb-in-hold to 5400.

AWOS-3P 119.025	WHIDBEY APP CON 118.2	UNICOM 123.0 (CTAF) 0
---------------------------	---------------------------------	---------------------------------



4 NM Holding Pattern

6000
3200

267°
087°

YAYUB

WIKUV

4.20°
TCH 43

2000

087°
088°

RW09

5400

WATTR

3000 X 75

088°

7.7 NM

4.1 NM

CATEGORY	A	B	C	D
CIRCLING	960-1¼ 850 (900-1¼)	980-1¼ 870 (900-1¼)	NA	

ELEV 110

REIL Rwy 9 0
MRL Rwy 9-27 0