

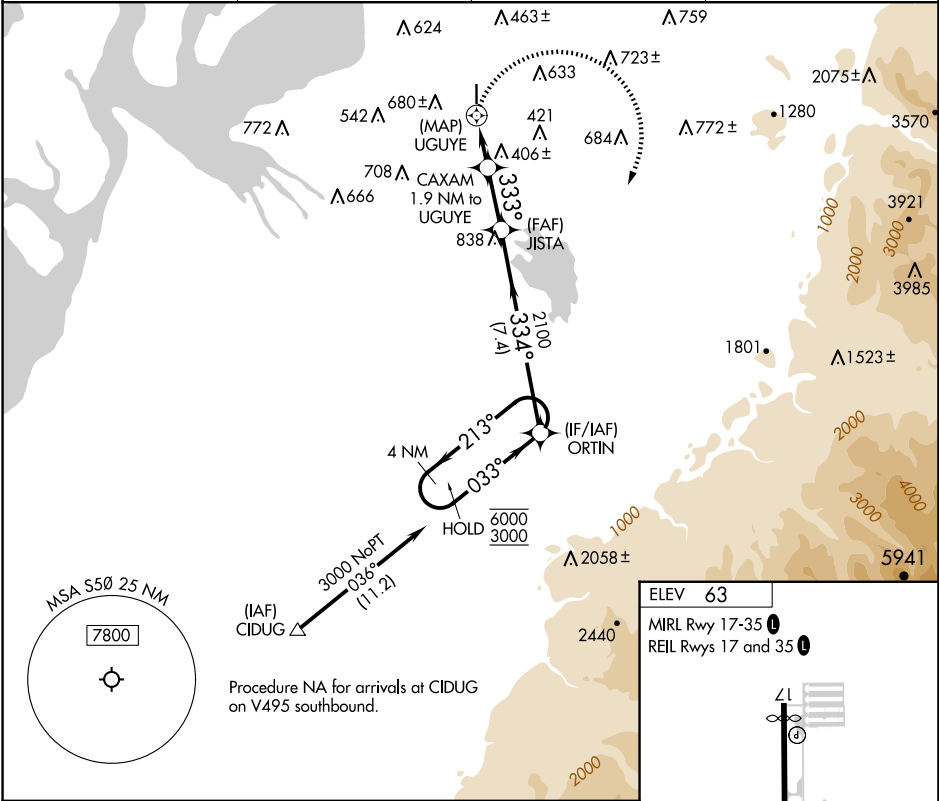
APP CRS	Rwy Idg	N/A
333°	TDZE	N/A
	Apt Elev	63

RNAV (GPS)-A
AUBURN MUNI (S50)

RNP APCH - GPS.	<p>⚠ NA</p> <p>Circling NA west of Rwy 17-35. Rwy 17 and 35 helicopter visibility reduction below 1 SM NA. When Circling to Rwy 17, 35 at night, operational VGSI required, remain on or above VGSI glidepath until threshold. Use Seattle-Tacoma Intl altimeter setting. Procedure NA at night when VGSI inoperative.</p>

MISSED APPROACH: Climbing right turn to 3000 direct ORTIN and hold.

SEA ASOS 118.0	SEATTLE APP CON 123.85	CLNC DEL 123.85	UNICOM 122.975 (CTAF) 0
-------------------	---------------------------	--------------------	----------------------------



3000	ORTIN	ORTIN	4 NM Holding Pattern
			213° → 6000 ← 033° 3000
		JISTA	
		CAXAM 1.9 NM to UGUYE	
		UGUYE	
		1140	
		333°	
		2100	
		334°	
		7.4 NM	
		2.3 NM	
		1.9 NM	
CATEGORY	A	B	C
CIRCLING	920-1¼ 857 (900-1¼)	1040-1½ 977 (1000-1½)	NA

ELEV 63
MIRL Rwy 17-35
REIL Rws 17 and 35

