


WAAS CH 63000 W30A	APP CRS 300°	Rwy Idg 3482 TDZE 5 Apt Elev 5
--	------------------------	---

RNAV (GPS) RWY 30

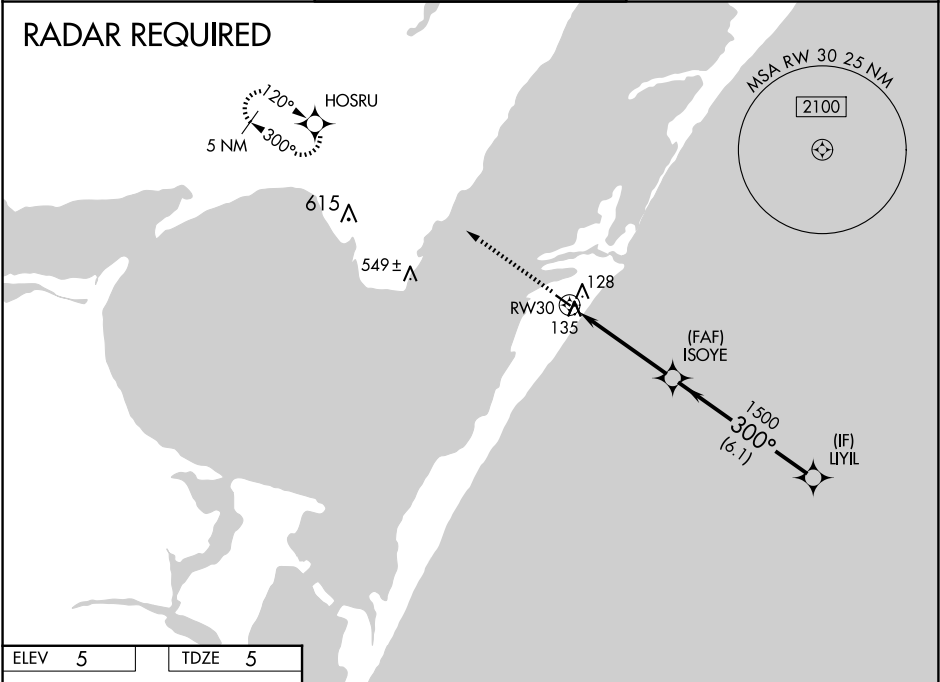
MUSTANG BEACH (R.A.S)



DME/DME RNP-0.3 NA. For uncompensated Baro-VNAV systems, LNAV/VNAV NA below -1.5°C (5°F) or above 44°C (111°F). If local altimeter setting not received, use Corpus Christi Intl altimeter setting and increase all DAs/MDAs 60 feet. Baro-VNAV and VDP NA when using Corpus Christi Intl altimeter setting.

MISSED APPROACH: Climb to 2000 direct HOSRU and hold.

AWOS-3 118.425	CORPUS APP CON 125.4 307.9	CTAF 122.9
--------------------------	--------------------------------------	----------------------





ELEV 5

TDZE 5

2000

HOSRU

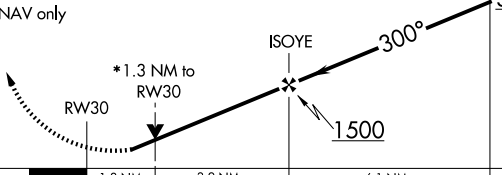




VGSI and RNAV glidepath not coincident (VGSI Angle 3.20/TCH 22).

Procedure Turn NA

* LNAV only



CATEGORY	A	B	C	D
LPV DA	362-1¼ 357 (400-1¼)			NA
LNAV/VNAV DA	435-1½ 430 (500-1½)			NA
LNAV MDA	440-1 435 (500-1)			NA
CIRCLING	500-1 495 (500-1)			NA

MIRL Rwy 12-30

GP 3.00° TCH 35