

WAAS  
CH **78301**  
**W13A**

APP CRS  
**133°**

Rwy Ldg **4999**  
TDZE **18**  
Apt Elev **18**

RNAV (GPS) RWY 13

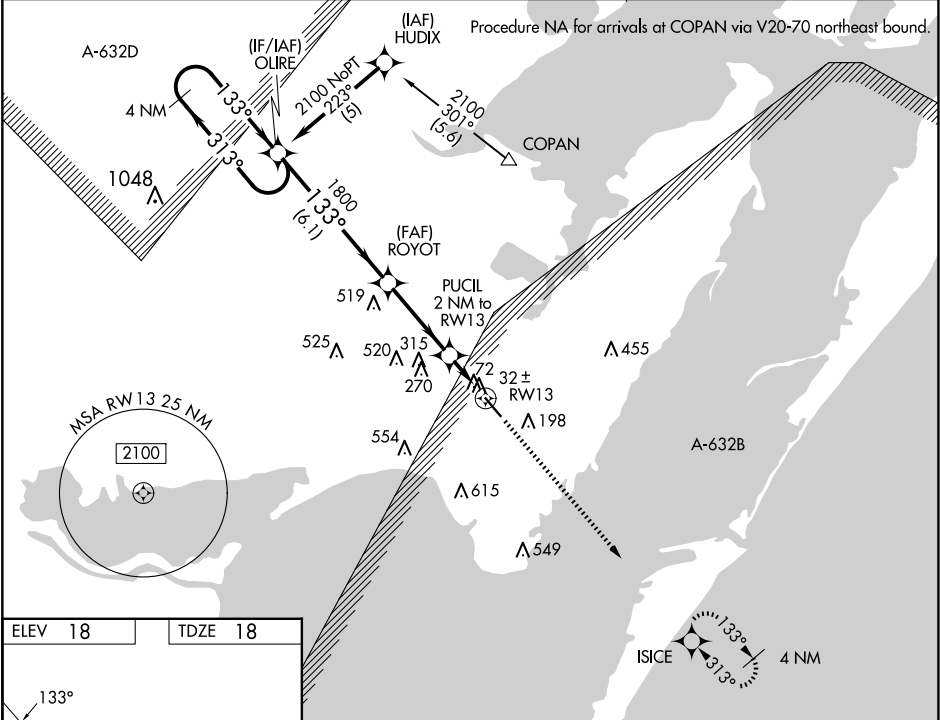
INGLESIDE RGNL (TFP)

RNP APCH-GPS

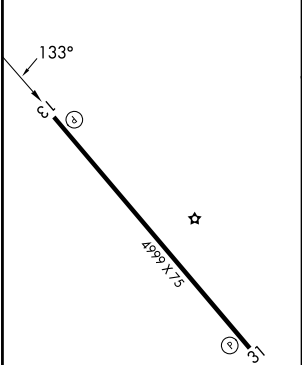
Baro-VNAV NA when using Mustang Beach altimeter setting. For uncompensated Baro-VNAV systems, LNAV/VNAV NA below -15°C or above 49°C. When local altimeter setting not received, use Mustang Beach altimeter setting: increase LPV DA to 292 feet; increase LNAV/VNAV DA to 310 feet; increase all MDAs 40 feet and Circling visibility Cat C ¼ SM. VDP NA when using Mustang Beach altimeter setting.

MISSED APPROACH:  
Climb to 2000 direct ISICE and hold.

|                          |  |                                 |
|--------------------------|--|---------------------------------|
| AWOS-3<br><b>118.775</b> | CORPUS APP CON<br><b>120.9 348.725</b> | UNICOM<br><b>122.7 (CTAF) 0</b> |
|--------------------------|--|---------------------------------|



|         |         |
|---------|---------|
| ELEV 18 | TDZE 18 |
|---------|---------|



4 NM Holding Pattern

OLIRE

ROYOT

PUCIL 2 NM to RW13

ISICE

2000

GP 3.00° TCH 40

2100

1800

700

0.9 NM to RW13

0.9

1.1 NM

3.4 NM

6.1 NM

| CATEGORY     | A     | B           | C                      | D                     |
|--------------|-------|-------------|------------------------|-----------------------|
| LPV DA       |       | 268-¾       | 250 (300-¾)            |                       |
| LNAV/VNAV DA |       | 286-⅞       | 268 (300-⅞)            |                       |
| LNAV MDA     |       | 340-1       | 322 (400-1)            |                       |
| CIRCLING     | 520-1 | 502 (600-1) | 860-2½<br>842 (900-2½) | 980-3<br>962 (1000-3) |

MIRL Rwy 13-31 0  
REIL Rwy 13 and 31