

WAAS CH 40308 W16A	APP CRS 156°	Rwy Ldg TDZE 686 Apt Elev 686
--	------------------------	---

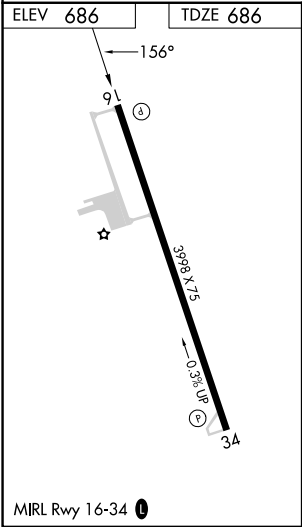
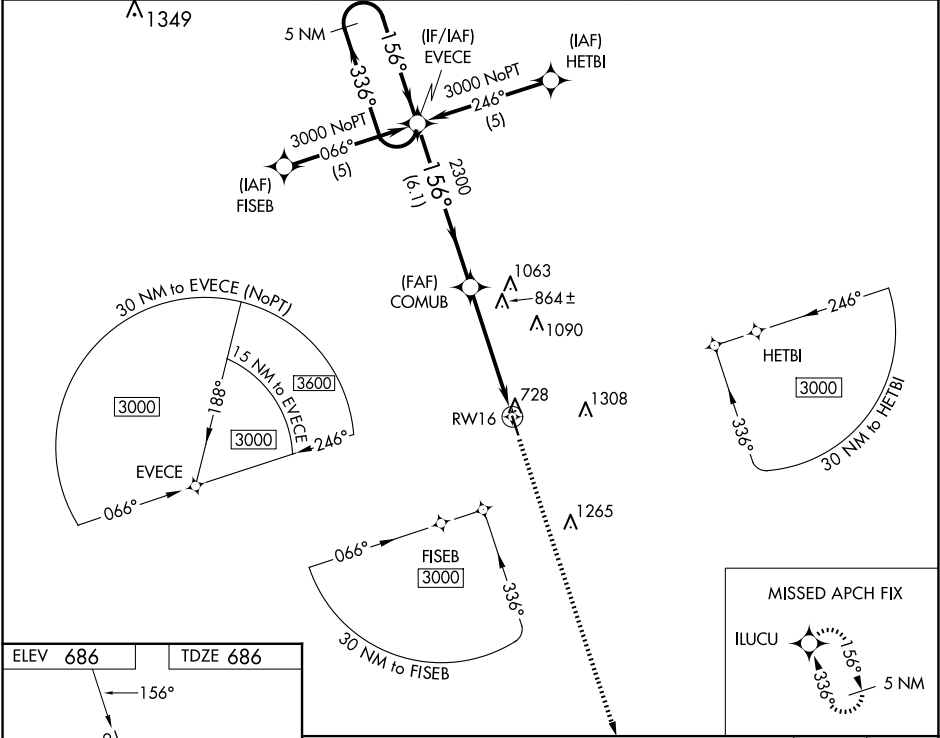
RNAV (GPS) RWY 16

HILLSBORO MUNI (INJ)

▼ Baro-VNAV NA when using Cleburne Rgnl altimeter setting. DME/DME RNP-0.3 NA. For uncompensated Baro-VNAV systems, LNAV/VNAV NA below -16°C (4°F) or above 54°C (130°F). Visibility reduction by helicopters NA. When local altimeter setting not received use Cleburne Rgnl altimeter setting and increase all DA/MDA 80 feet, increase LPV and LNAV/VNAV visibility ½ mile all Cats.

▲ MISSED APPROACH: Climb to 3000 direct ILUCU and hold.

AWOS-3PT 118.725	WACO APP CON ★ 127.65 352.0	CTAF 122.90
----------------------------	---------------------------------------	-----------------------



5 NM Holding Pattern VGSI and RNAV glidepath not coincident (VGSI Angle 3.00/TCH 41).

CATEGORY	A	B	C	D
LPV DA	936-1	250 (300-1)	NA	
LNAV/VNAV DA	1128-1½	442 (500-1½)	NA	
LNAV MDA	1120-1	434 (500-1)	NA	
CIRCLING	1180-1 494 (500-1)	1200-1 514 (600-1)	NA	

SC-2, 10 JUL 2025 to 07 AUG 2025

SC-2, 10 JUL 2025 to 07 AUG 2025