

WAAS  
CH **77901**  
**W14A**


APP CRS  
**138°**

Rwy Idg  
TDZE **75**  
Apt Elev **75**

**RNAV (GPS) RWY 14**

SOUTH TEXAS INTL AT EDINBURG (EBG)

RNP APCH.

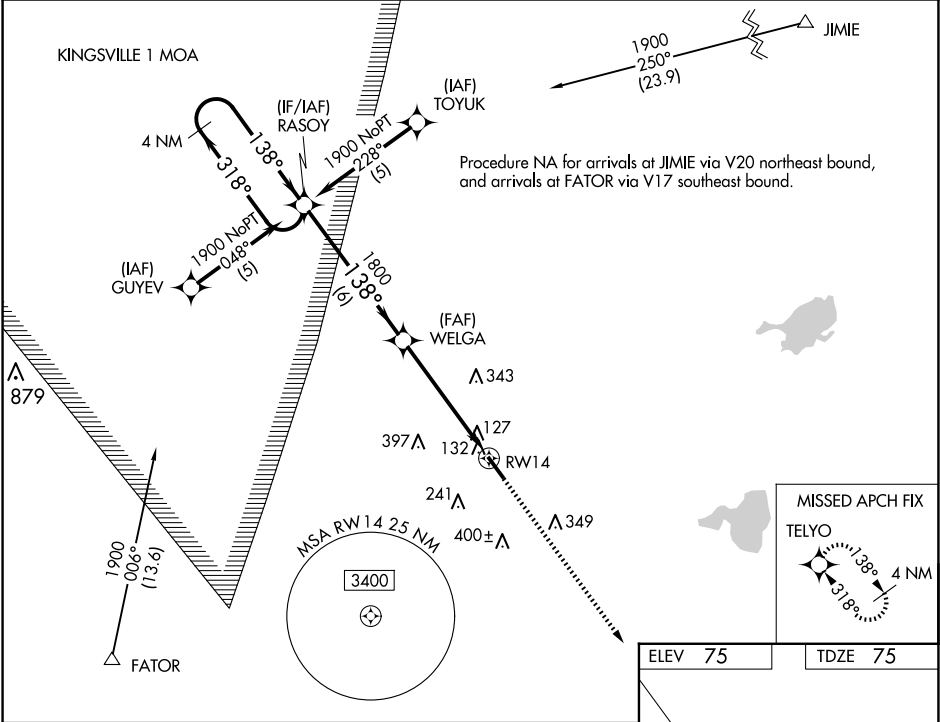
 Rwy 14 helicopter visibility reduction below ¾ SM NA.  
For uncompensated Baro-VNAV systems, LNAV/VNAV NA  
below -1.5°C (5°F) or above 48°C (120°F).

MISSED APPROACH: Climb to 1900  
direct TELYO and hold.

AWOS-3PT  
**118.025**

VALLEY APP CON  
**126.55 377.2**

UNICOM  
**122.8 (CTAF) 0**



4 NM  
Holding Pattern

VGSI and RNAV glidepath not coincident  
(VGSI Angle 3.00/TCH 42).

1900  
↑

TELYO

1900  
← 318°  
138° →

GP 3.00°  
TCH 45

138°

WELGA

1800

6 NM

5.2 NM

RWY 14

CATEGORY	A	B	C	D
LPV DA		325-1	250 (300-1)	
LNAV/VNAV DA		441-1¼	366 (400-1¼)	
LNAV MDA		440-1	365 (400-1)	440-1¼ 365 (400-1¼)
CIRCLING	500-1¼ 425 (500-1¼)	620-1¼ 545 (600-1¼)	760-2 685 (700-2)	760-2¼ 685 (700-2¼)

MIRL Rwy 14-32 0

REIL Rwy 14 0