

WAAS CH 97436 W17A	APP CRS 173°	Rwy Idg TDZE Apt Elev	4497 1387 1387
--	------------------------	-----------------------------	---

RNAV (GPS) RWY 17

COMANCHE COUNTY-CITY (MKN)

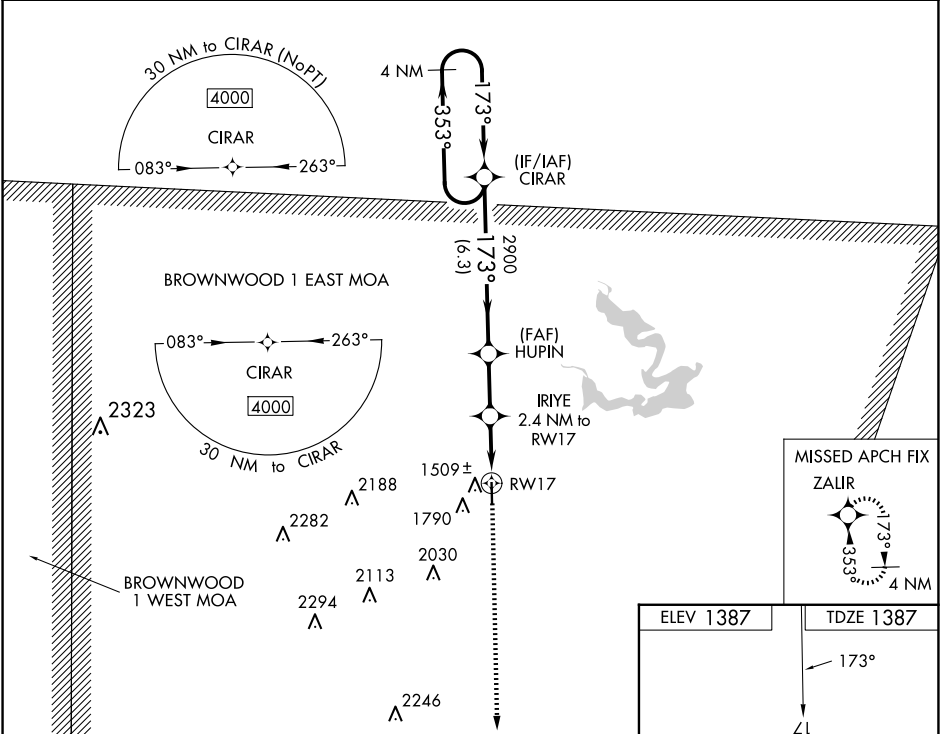
▼

⚠

Night landing: Rwy 35 NA. DME/DME RNP-0.3 NA. When local altimeter setting is not received, use Brownwood altimeter setting: increase all DA 46 feet and all MDA 60 feet, increase LNAV/VNAV visibility all Cats ½ mile. Baro-VNAV and VDP NA when using Brownwood altimeter setting. For uncompensated Baro-VNAV systems, LNAV/VNAV NA below -17°C (2°F) or above 54°C (130°F).

MISSED APPROACH:
Climb to 4000 direct
ZAIIR and hold.

AWOS-3 118.575	FORT WORTH CENTER 127.15 314.0	UNICOM 123.075 (CTAF) 0
--------------------------	--	-----------------------------------



4 NM Holding Pattern

VGSI and RNAV glidepath not coincident (VGSI Angle 4.00/TCH 33).

4000 ← 353°
→ 173°

GP 3.00°
TCH 40

2900

6.3 NM

2.2 NM

1.6 NM

0.8 NM

HUPIN 2900

IRIYE 2.4 NM to RWY17

*2180

RWY17

4000

ZAIIR

*LNAV only.

CATEGORY	A	B	C	D
LPV DA	1637-1	250 (300-1)	NA	
LNAV/VNAV DA	1686-1	299 (300-1)	NA	
LNAV MDA	1760-1	373 (400-1)	NA	
C CIRCLING	2100-1	713 (800-1)	NA	

ELEV 1387

TDZE 1387

173°

Z1

4497 X 7.5

0.3% UP

35

MIRL Rwy 17-35 0

SC-3, 10 JUL 2025 to 07 AUG 2025

SC-3, 10 JUL 2025 to 07 AUG 2025