

WAAS CH 78341 W16A	APP CRS 159°	Rwy Idg 3102 TDZE 541 Apt Elev 541
--	------------------------	---

RNAV (GPS) RWY 16

HOBBY FLD (77S)

RNP APCH.

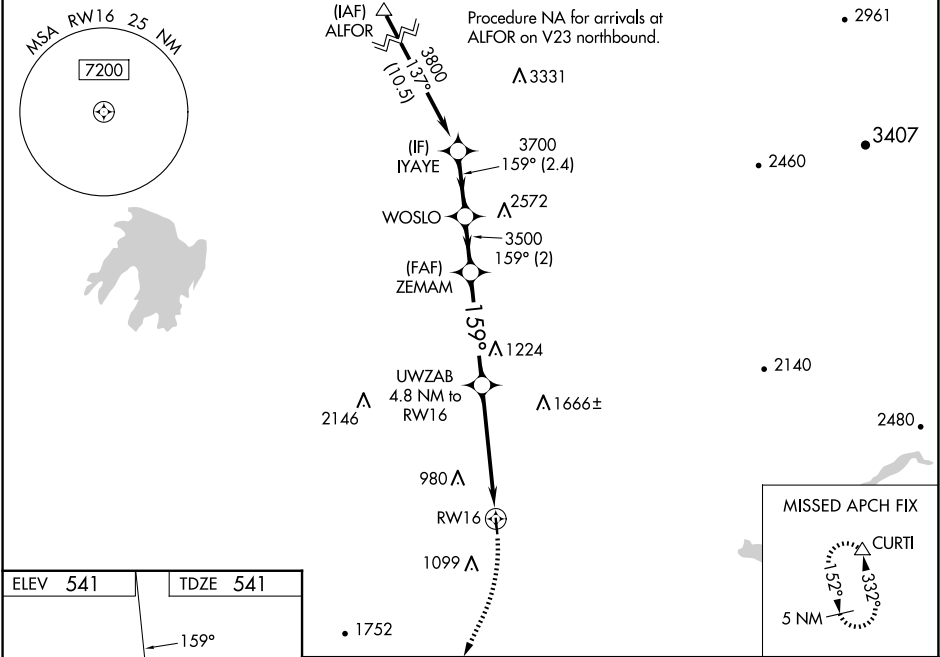
▼

▲NA

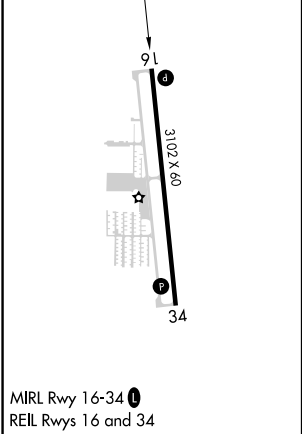
For uncompensated Baro-VNAV systems, LNAV/VNAV NA below -16°C or above 54°C. Circling Rwy 34 NA at night. When local altimeter setting not received, use Eugene altimeter setting and increase LPV DA to 1102 feet and all LPV visibilities ¼ SM, and increase LNAV/VNAV DA to 1474; increase all MDAs 80 feet. Baro-VNAV and VDP NA when using Eugene altimeter setting. Rwy 16 helicopter visibility reduction below ¾ SM NA.

MISSED APPROACH: Climbing right turn to 6000 direct CURTI and hold, continue climb-in-hold to 6000.

AWOS-3 119.275	CASCADE APP CON ★ 119.6	UNICOM 122.7 (CTAF) 0
--------------------------	-----------------------------------	--



ELEV 541	TDZE 541
----------	----------



IYAYE					WOSLO					ZEMAM					UWZAB					6000		CURTI	
VGSI and RNAV glidepath not coincident (VGSI Angle 3.60/TCH 26).																							
3800		159°		3700		3500		3500		*2160		4.8 NM to RW16		*4 NM to RW16		*LNAV only.		RW16					
GP 3.10°		TCH 40																					
2.4 NM		2 NM										4.1 NM		0.8 NM		4 NM							
CATEGORY		A		B		C		D															
LPV DA		1041-1 ³ / ₈ 500 (500-1 ³ / ₈)																					
LNAV/ VNAV DA		1413-2 ¹ / ₂ 872 (900-2 ¹ / ₂)																					
LNAV MDA		1820-1 ¹ / ₄ 1279 (1300-1 ¹ / ₄)				1820-1 ¹ / ₂ 1279 (1300-1 ¹ / ₂)				1820-3 1279 (1300-3)													
CIRCLING		1820-1 ¹ / ₄ 1279 (1300-1 ¹ / ₄)				1820-1 ¹ / ₂ 1279 (1300-1 ¹ / ₂)				2260-3 1719 (1800-3)				2740-3 2199 (2200-3)									