

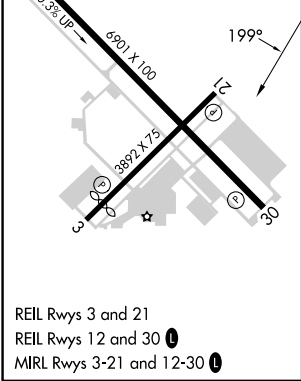
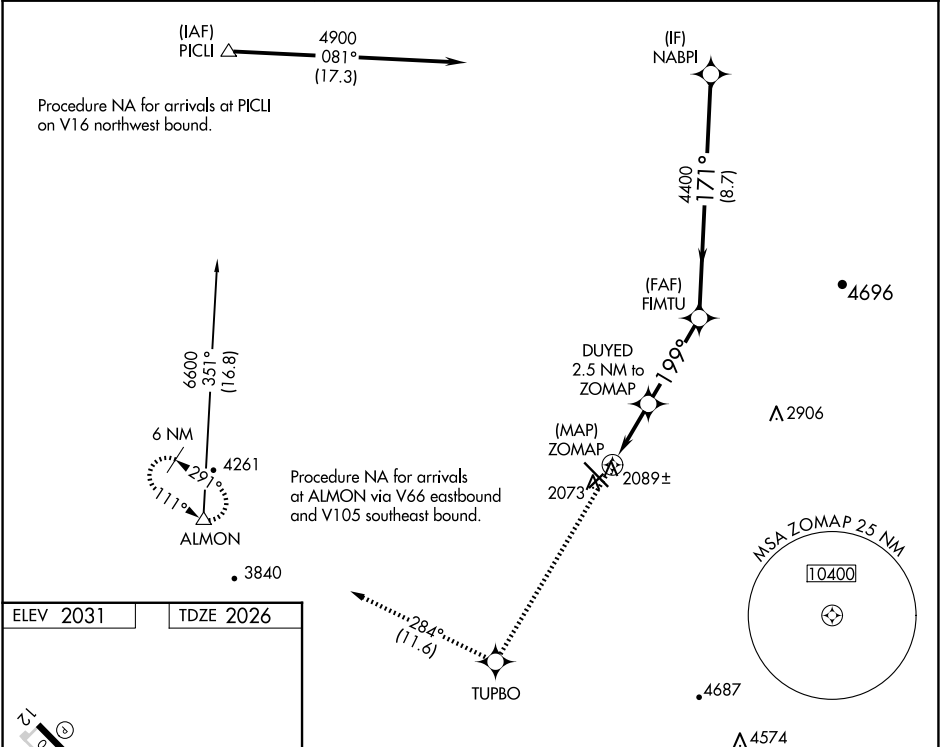
WAAS CH 56325 W21A	APP CRS 199°	Rwy Idg TDZE Apt Elev	3892 2026 2031
--	------------------------	-----------------------------	---

RNAV (GPS) RWY 21

MARANA RGNL (AVQ)

RNP APCH.	MISSED APPROACH: Climb to 6700 direct TUPBO and on track 284° to ALMON and hold, continue climb-in-hold 6700.
▼ ▲NA	Rwy 21 helicopter visibility reduction below 1 SM NA. When local altimeter setting not received, use Ryan Fld altimeter setting and increase all MDAs 100 feet, increase LP Cat C visibility ⅛ SM and increase LNAV Cat C visibility ¼ SM.

AWOS-3 118.375	TUCSON APP CON 119.4 318.1	UNICOM 123.0 (CTAF) 0
--------------------------	--------------------------------------	---------------------------------



6700	TUPBO	tr 284°	ALMON	VGSI and descent angles not coincident (VGSI Angle 2.91/TCH 41).
				NABPI
			FMTU	
			DUYED 2.5 NM to ZOMAP	4900
			ZOMAP	4400
			3120	171°
			199°	
			0.5	2.5 NM
			3.6 NM	8.7 NM
CATEGORY	A	B	C	D
LP MDA	2340-1 314 (400-1)			NA
LNAV MDA	2640-1 614 (700-1)		2640-1¾ 614 (700-1¾)	NA

SW-4, 10 JUL 2025 to 07 AUG 2025

SW-4, 10 JUL 2025 to 07 AUG 2025