

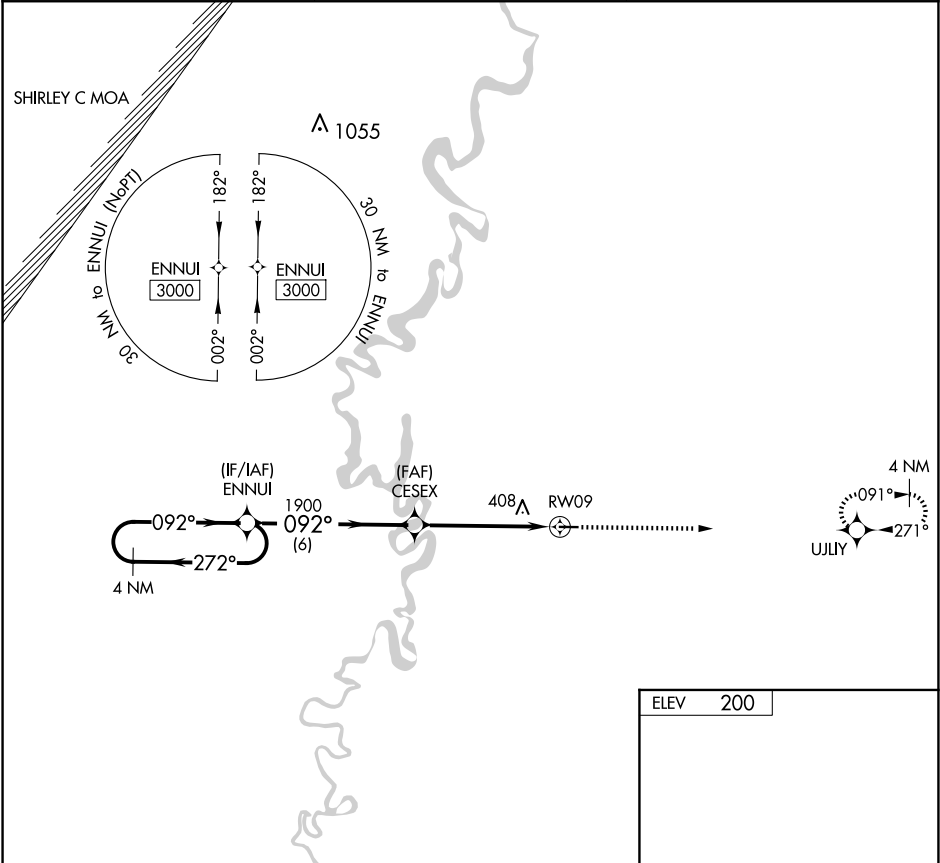
APP CRS	Rwy Idg	N/A
092°	TDZE	N/A
	Apt Elev	200

RNAV (GPS)-A

WOODRUFF COUNTY (M60)

<div><div></div><div>NA</div></div> <div>Rwy 9, 27 helicopter visibility reduction below 1 SM NA. DME/DME RNP-0.3 NA. Procedure NA at night. Use Newport altimeter setting.</div>	<div>MISSED APPROACH: Climb to 3000 direct UJLY and hold.</div>
---	---

M19 AWOS-3PT 118.15	MEMPHIS CENTER 135.3 335.8	CTAF 122.9 0
------------------------	-------------------------------	-----------------



4 NM Holding Pattern		ENNUJ		Visual Segment - Obstacles.		3000	UJLY	092° to RW09	
3000 ← 272° 092° →				CESEX		1900		3797 X 75 27	
		6 NM		5.2 NM		RW09			
CATEGORY		A		B		C		D	
CIRCLING		740-1 540 (600-1)		820-1 620 (700-1)		NA		MIRL Rwy 9-27 0	

RNAV (GPS)-A

SC-1, 10 JUL 2025 to 07 AUG 2025

SC-1, 10 JUL 2025 to 07 AUG 2025