

WAAS CH <b>78425</b> <b>W01A</b>	APP CRS <b>010°</b>	Rwy Idg <b>3879</b> TDZE <b>550</b> Apt Elev <b>553</b>
--	------------------------	---

# RNAV (GPS) RWY 1

## HOWARD COUNTY (M77)

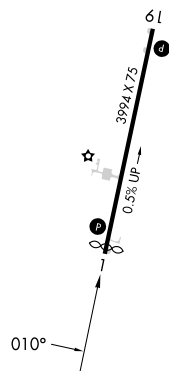
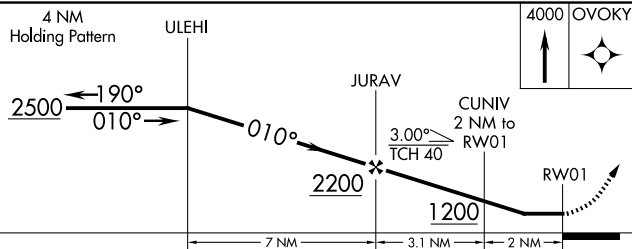
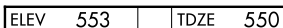
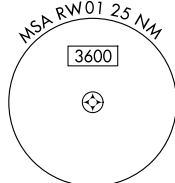
RNP APCH.

**T** Procedure NA at night. Rwy 1 helicopter visibility reduction below 1 SM NA.  
**A** NA Use De Queen altimeter setting; when not received, use Texarkana altimeter setting and increase all MDA 20 feet.

**MISSED APPROACH:** Climb to 4000 direct OVOKY and hold, continue climb-in-hold to 4000.

FORT WORTH CENTER  
123.925 269.475

CTAF  
122.9 **L**



CATEGORY	A	B	C	D
LP MDA	940-1	390 (400-1)	NA	
LNAV MDA	960-1	410 (500-1)	NA	
CIRCLING	1100-1 547 (600-1)	1240-1 687 (700-1)	NA	