

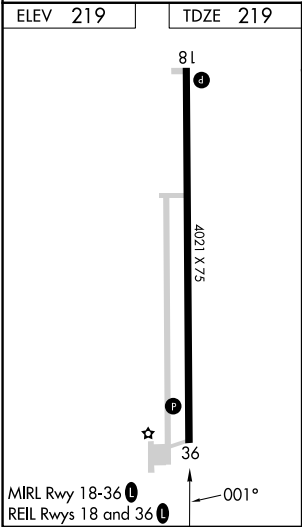
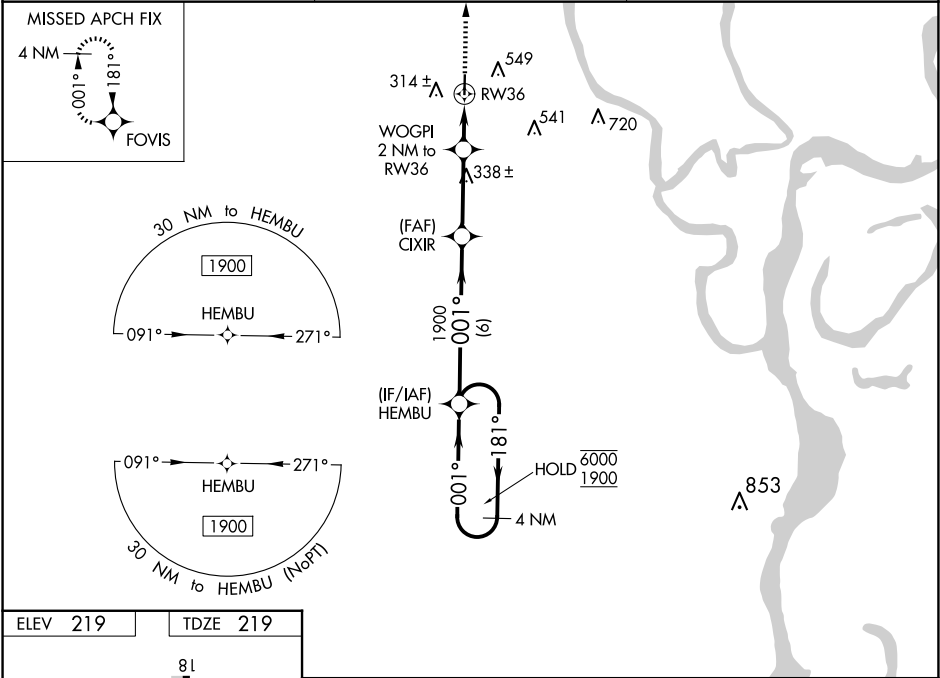
WAAS CH 69433 W36A	APP CRS 001°	Rwy Idg TDZE Apt Elev	4021 219 219
--	------------------------	-----------------------------	---

RNAV (GPS) RWY 36

MARIANNA/LEE COUNTY-STEVE EDWARDS FLD (6M7)

RNP APCH.	Rwy 36 helicopter visibility reduction below ¾ SM NA. Baro-VNAV NA. Use Tunica altimeter setting; when not received, use West Memphis altimeter setting and increase LPV DA to 555 feet; LNAV/VNAV DA to 666 feet and all MDA 40 feet; increase Circling Cat C visibility ¼ SM.	MISSED APPROACH: Climb to 1900 direct FOVIS and hold.
-----------	---	---

UTA AWOS-3 118.075	MEMPHIS CENTER 135.3 335.8	UNICOM 122.8 (CTAF) 0
------------------------------	--------------------------------------	---------------------------------



1900	FOVIS	CIXIR	HEMBU	4 NM Holding Pattern
*LNAV only.	WOGPI 2 NM to RW36	1900	181° → 6000 ← 001° 1900	GP 3.00° TCH 53
2 NM	3.1 NM	6 NM		
CATEGORY	A	B	C	D
LPV DA	527-1	308 (400-1)		NA
LNAV/VNAV DA	638-1 3/8	419 (500-1 3/8)		NA
LNAV MDA	660-1	441 (500-1)	660-1 3/8 441 (500-1 3/8)	NA
CIRCLING	920-1	701 (800-1)	920-2 701 (800-2)	NA

SC-1, 10 JUL 2025 to 07 AUG 2025

SC-1, 10 JUL 2025 to 07 AUG 2025