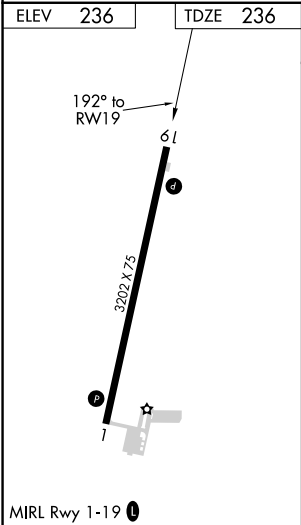
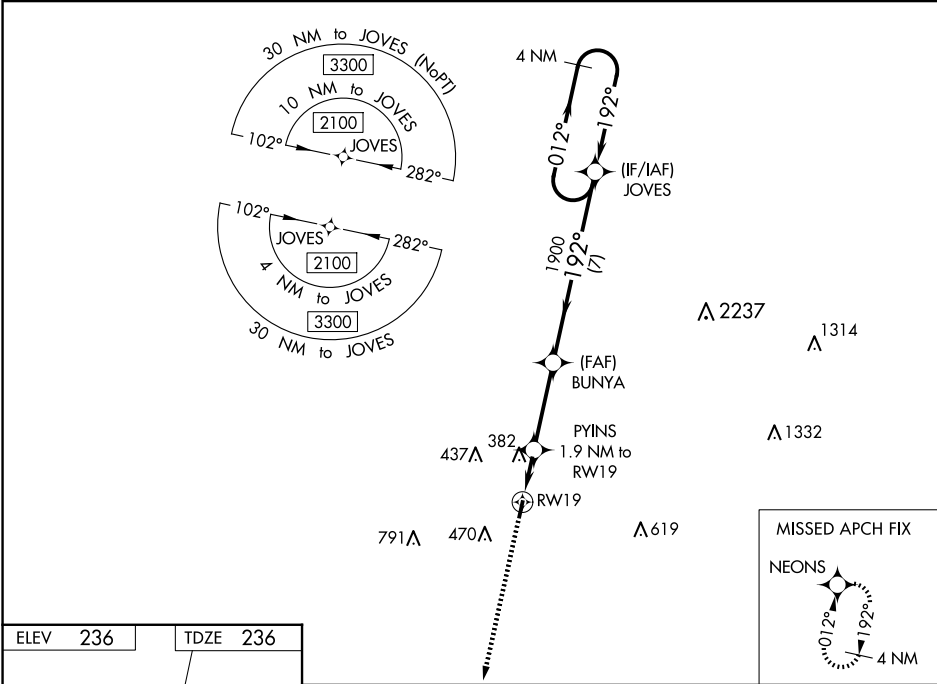


WAAS CH 63237 W19A	APP CRS 192°	Rwy Idg 3202 TDZE 236 Apt Elev 236
--	------------------------	---

RNAV (GPS) RWY 19
SHERIDAN-GRANT COUNTY RGNL (9M8)

<p>Baro-VNAV NA. DME/DME RNP-0.3 NA. Helicopter visibility reduction below ¾ SM NA. Night landing: Rwy 1 NA. Use Pine Bluff altimeter setting, when not received, use Little Rock altimeter setting and increase all DA 5 feet and all MDA 20 feet: increase Circling Cat C visibility ¼ mile.</p>	<p>MISSED APPROACH: Climb to 1900 direct NEONS and hold.</p>
--	--

PBF ASOS 120.775	LITTLE ROCK APP CON 135.4 353.6	UNICOM 122.8 (CTAF)
----------------------------	---	-------------------------------



1900	NEONS	VGSI and RNAV glidepath not coincident (VGSI Angle 3.25/TCH 43).			
↑	✧				
*LNAV only.		PYINS 1.9 NM to RW19	BUNYA 1900	JOVES 4 NM Holding Pattern	
		880*	1900	2100	GP 3.00° TCH 40
		1.9 NM	3.2 NM	7 NM	
CATEGORY	A	B	C	D	
LPV DA	590-1¼		354 (400-1¼)		NA
LNAV/VNAV DA	682-1½		446 (500-1½)		NA
LNAV MDA	700-1	464 (500-1)	700-1¾ 464 (500-1¾)		NA
CIRCLING	740-1 504 (600-1)	840-1 604 (700-1)	960-2 724 (800-2)		NA

SC-1, 10 JUL 2025 to 07 AUG 2025

SC-1, 10 JUL 2025 to 07 AUG 2025