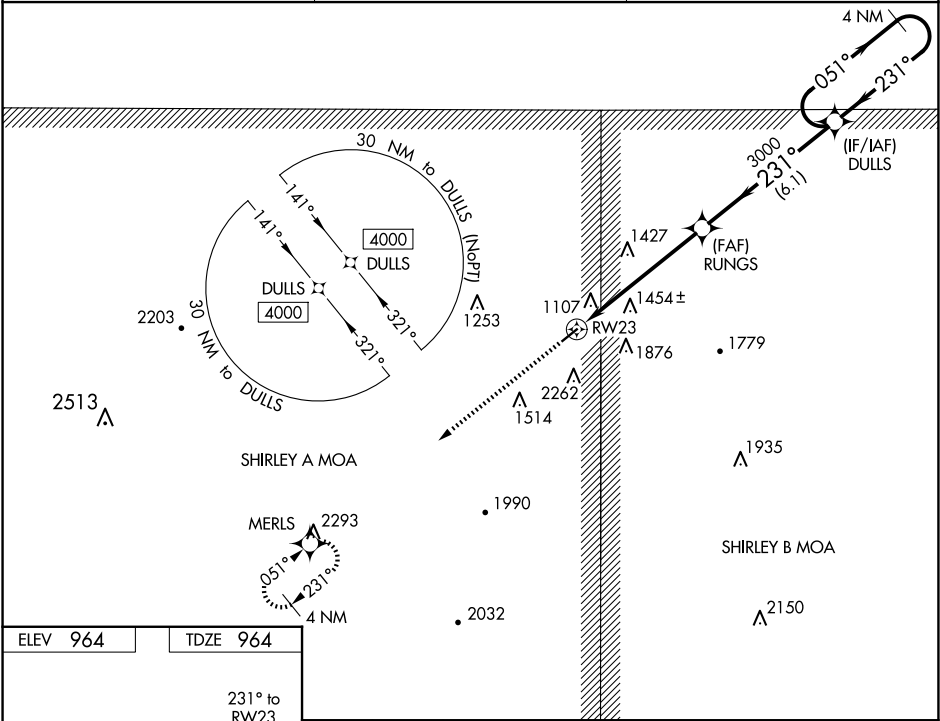


WAAS CH 69238 W23A	APP CRS 231°	Rwy Idg TDZE Apt Elev	4003 964 964
--	------------------------	-----------------------------	---

RNAV (GPS) RWY 23
SEARCY COUNTY (4A5)

<p>▽ DME/DME RNP-0.3 NA. Procedure NA at night. Circling NA SE of Rwy 5-23. Baro-VNAV NA. Use Flippin altimeter setting; when not received, use Harrison altimeter setting and increase all Cats LPV DA to 1555 and visibility 1/8 mile, LNAV/VNAV all Cats DA to 2016, and all MDA 60 feet, LNAV Cat B/C and Circling Cat C visibility 1/4 mile. Helicopter visibility reduction below 1 SM NA.</p>	<p>MISSD APPROACH: Climb to 4000 direct MERLS and hold.</p>
---	--

FLP AWOS-3 132.075	MEMPHIS CENTER 126.85 281.55	CTAF 122.9 0
------------------------------	--	------------------------



ELEV 964	TDZE 964				
		4000	MERLS	4 NM Holding Pattern	
		RUNGS	3000	231°	4000
		RWY 23	3000	231°	GP 3.25° TCH 44
		5.8 NM	6.1 NM		
CATEGORY	A	B	C	D	
LPV DA	1512-1¾		548 (600-1¾)	NA	
LNAV/VNAV DA	1973-4		1009 (1100-4)	NA	
LNAV MDA	1760-1 796 (800-1)	1760-1¼ 796 (800-1¼)	1760-2½ 796 (800-2½)	NA	
CIRCLING	1760-1 796 (800-1)	1760-1¼ 796 (800-1¼)	1760-2½ 796 (800-2½)	NA	

SC-1, 10 JUL 2025 to 07 AUG 2025

SC-1, 10 JUL 2025 to 07 AUG 2025