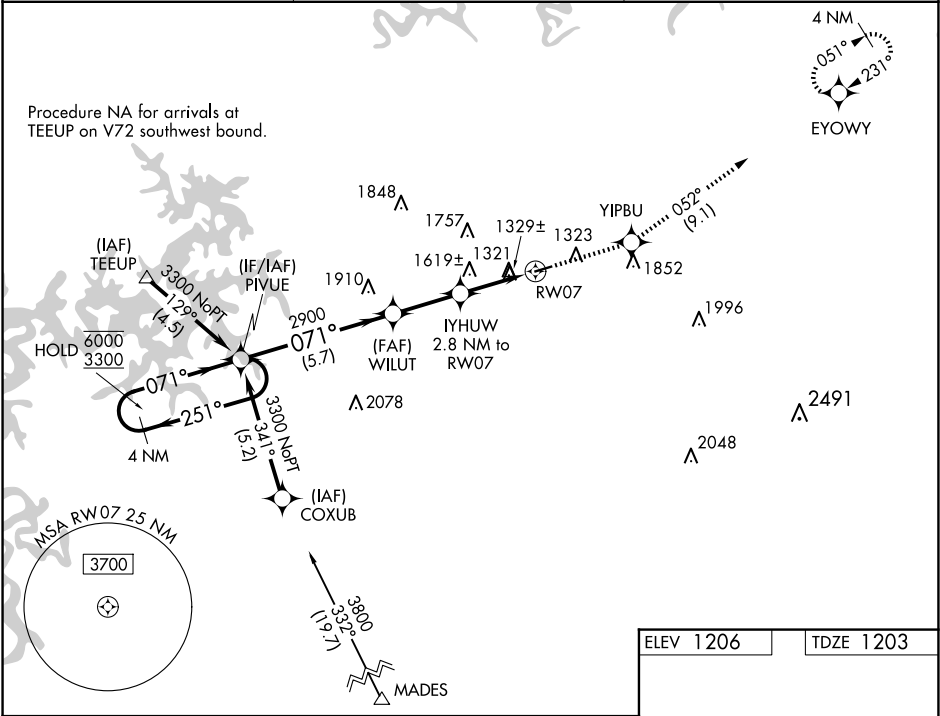


WAAS CH 40242 W07A	APP CRS 071°	Rwy ldg TDZE 1203 Apt Elev 1206
--	------------------------	---

RNAV (GPS) RWY 7
CARROLL COUNTY (4M1)

RNP APCH-GPS. ▼ Rwy 7 helicopter visibility reduction below 1 SM NA. Use Branson altimeter setting; when not received, use Rogers altimeter setting and increase all MDA 20 feet. Rwy 7 Straight-in and Circling minimums NA at night.		MISSED APPROACH: Climb to 3300 direct YIPBU and on track 052° to EYOWY and hold.
BBG AWOS-3 124.625	RAZORBACK APPROACH ★ 126.6 305.2	CTAF 122.9



Visual Segment - Obstacles.		3300	YIPBU	tr 052°	EYOWY
4 NM Holding Pattern		PIVUE			
6000 ← 251°		071° →	WILUT	IYHUW 2.8 NM to RWY 7	RWY 7
3300		071°	2900	2100	
			5.7 NM	2.5 NM	2.8 NM
CATEGORY	A	B	C	D	
LP MDA	1760-1	557 (600-1)	NA		
LNAV MDA	1940-1	737 (800-1)	NA		
CIRCLING	1940-1 734 (800-1)	1980-1 774 (800-1)	NA		

