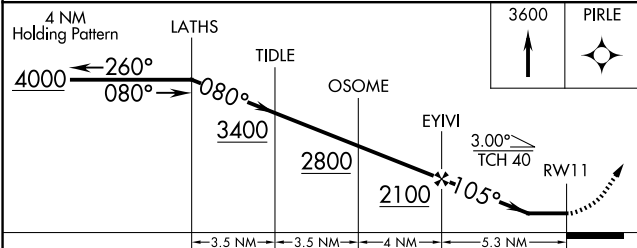
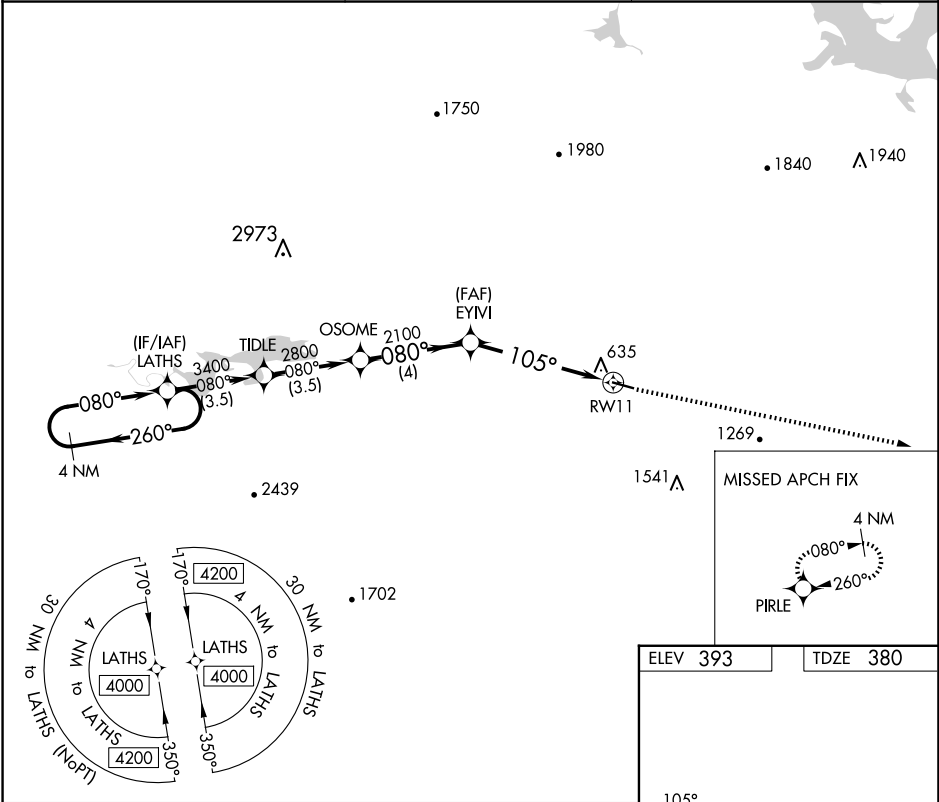


APP CRS	Rwy Idg	4466
105°	TDZE	380
	Apt Elev	393

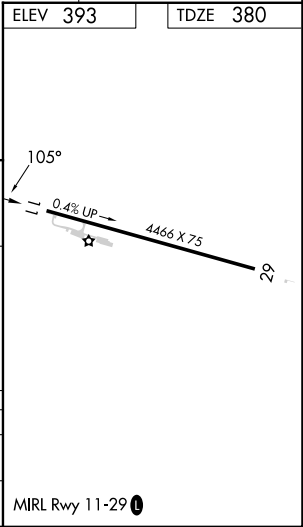
RNAV (GPS) RWY 11  
DANVILLE MUNI (32A)

<div><div>▼</div><div>▲ NA</div></div>	Circling NA for Cat D south of Rwy 11-29. DME/DME RNP-0.3 NA. Procedure NA at night. Helicopter visibility reduction below 1 SM NA. Use Russellville Rgnl altimeter setting, when not received procedure NA.	MISSED APPROACH: Climb to 3600 direct PIRLE and hold.
--	--	--

RUE ASOS 132.475	MEMPHIS CENTER 128.475 377.15	CTAF 122.9 0
---------------------	----------------------------------	-----------------



CATEGORY	A	B	C	D
LNAV MDA	940-1	560 (600-1)	940-1 5/8	560 (600-1 5/8)
CIRCLING	1040-1 647 (700-1)	1060-1 667 (700-1)	1060-1 3/4 667 (700-1 3/4)	1480-3 1087 (1100-3)



SC-1, 10 JUL 2025 to 07 AUG 2025

SC-1, 10 JUL 2025 to 07 AUG 2025